

SALES EXHIBITION IN OSLO 2023
FROM TUESDAY NOVEMBER 28, AT 18.00

IMPORTANT ANTIQUE MAPS, ATLASES & ILLUSTRATED BOOKS



- Høbstæder
 • Læstæder
 • Strandstæder
 Rigsgrense
 Stiftsgrense
 Amtsgrense
 Fogderiegrense
 A Agershus Amt
 H Smaalenenes „
 H Hordalens „
 C Christians „
 B Budskervs „
 JL Jacobsberg og Lauerigs „
 BR Bratsbergs „
 NR Videns og Raabergeløst „
 LM Lister og Mandals „
 SB Søndre Bergenshus „
 NB Nørre Bergenshus „
 R Romsdals „
 ST Søndre Trondhjems „
 NT Nørre Trondhjems „
 1 Ager og Follung Fogderie
 2 Nørre Romsdals „
 3 Øvre Romsdals „
 4 Ager og Thune „
 5 Lille og Marker „
 6 Raskstad, Høgen og Frølands „
 7 Hordalens „
 8 Soler og Gudalens „
 9 Totens „
 10 Guldbrandsdalens „
 11 Valdres, Land og Hordalens „
 12 Budskervs „
 13 Ringebu og Hallingdals „
 14 Aunmedal og Sandværs „
 15 Jacobsbergs „
 16 Lauerigs „
 17 Nørre Telemarkens „
 18 Bamble „
 19 Øvre Telemarkens „
 20 Videns „
 21 Raabergeløst „
 22 Mandals „
 23 Lister „
 24 Jæderen og Dalens „
 25 Røst „
 26 Søndre og Nørre Hordalens „
 27 Nørre og Søndre Sog „
 28 Søndre og Nørre Sog „
 29 Romsdals „
 30 Nørre og Søndre „
 31 Stranden og Selboe „
 32 Øke og Gudalens „
 33 Færes „
 34 Stør og Værdalens „
 35 Inders „
 36 Nørre og Søndre „

Christiansands Stift

Bergens Stift

Trondhjems Stift

Norges mærkeligste Fjeld Høider

- 1 Galdhø Piggens 8400'
- 2 Skagastølshinden 7850'
- 3 Snæfjell 7800'
- 4 Høgafjeld 7000'
- 5 Lomsfjeld 6500'
- 6 Lomsfjeld 6400'
- 7 Lodalens Knaab 6400'
- 8 Gornstad 6000'
- 9 Fostfjeren 6000'
- 10 Rindens 6000'
- 11 Sulefjeld 5550'
- 12 Nantgardsfjeld 5500'
- 13 Skovfjeld 5500'
- 14 Bithorn 5400'
- 15 Grøttingfjeld 5400'
- 16 Sot. Nuten 5200'
- 17 Sollefjeldens 4650'
- 18 Lomsfjeldens 4600'
- 19 Grøttingfjeld 4700'
- 20 Blomfjeld 4600'
- 21 Hæstefjeld 4500'
- 22 Hæstefjeld 4500'
- 23 Hæstefjeld 4500'
- 24 Hæstefjeld 4500'
- 25 Hæstefjeld 4500'
- 26 Hæstefjeld 4500'

27 Hæstefjeld 4500'
 28 Hæstefjeld 4500'
 29 Hæstefjeld 4500'
 30 Hæstefjeld 4500'
 31 Hæstefjeld 4500'
 32 Hæstefjeld 4500'
 33 Hæstefjeld 4500'
 34 Hæstefjeld 4500'
 35 Hæstefjeld 4500'
 36 Hæstefjeld 4500'

37 Hæstefjeld 4500'
 38 Hæstefjeld 4500'
 39 Hæstefjeld 4500'
 40 Hæstefjeld 4500'
 41 Hæstefjeld 4500'
 42 Hæstefjeld 4500'
 43 Hæstefjeld 4500'
 44 Hæstefjeld 4500'
 45 Hæstefjeld 4500'
 46 Hæstefjeld 4500'

47 Hæstefjeld 4500'
 48 Hæstefjeld 4500'
 49 Hæstefjeld 4500'
 50 Hæstefjeld 4500'
 51 Hæstefjeld 4500'
 52 Hæstefjeld 4500'
 53 Hæstefjeld 4500'
 54 Hæstefjeld 4500'
 55 Hæstefjeld 4500'
 56 Hæstefjeld 4500'

57 Hæstefjeld 4500'
 58 Hæstefjeld 4500'
 59 Hæstefjeld 4500'
 60 Hæstefjeld 4500'
 61 Hæstefjeld 4500'
 62 Hæstefjeld 4500'
 63 Hæstefjeld 4500'
 64 Hæstefjeld 4500'
 65 Hæstefjeld 4500'
 66 Hæstefjeld 4500'

67 Hæstefjeld 4500'
 68 Hæstefjeld 4500'
 69 Hæstefjeld 4500'
 70 Hæstefjeld 4500'
 71 Hæstefjeld 4500'
 72 Hæstefjeld 4500'
 73 Hæstefjeld 4500'
 74 Hæstefjeld 4500'
 75 Hæstefjeld 4500'
 76 Hæstefjeld 4500'

77 Hæstefjeld 4500'
 78 Hæstefjeld 4500'
 79 Hæstefjeld 4500'
 80 Hæstefjeld 4500'
 81 Hæstefjeld 4500'
 82 Hæstefjeld 4500'
 83 Hæstefjeld 4500'
 84 Hæstefjeld 4500'
 85 Hæstefjeld 4500'
 86 Hæstefjeld 4500'

87 Hæstefjeld 4500'
 88 Hæstefjeld 4500'
 89 Hæstefjeld 4500'
 90 Hæstefjeld 4500'
 91 Hæstefjeld 4500'
 92 Hæstefjeld 4500'
 93 Hæstefjeld 4500'
 94 Hæstefjeld 4500'
 95 Hæstefjeld 4500'
 96 Hæstefjeld 4500'

97 Hæstefjeld 4500'
 98 Hæstefjeld 4500'
 99 Hæstefjeld 4500'
 100 Hæstefjeld 4500'

101 Hæstefjeld 4500'
 102 Hæstefjeld 4500'
 103 Hæstefjeld 4500'
 104 Hæstefjeld 4500'

105 Hæstefjeld 4500'
 106 Hæstefjeld 4500'
 107 Hæstefjeld 4500'
 108 Hæstefjeld 4500'

109 Hæstefjeld 4500'
 110 Hæstefjeld 4500'

111 Hæstefjeld 4500'
 112 Hæstefjeld 4500'

113 Hæstefjeld 4500'
 114 Hæstefjeld 4500'

115 Hæstefjeld 4500'
 116 Hæstefjeld 4500'

117 Hæstefjeld 4500'
 118 Hæstefjeld 4500'

119 Hæstefjeld 4500'
 120 Hæstefjeld 4500'

121 Hæstefjeld 4500'
 122 Hæstefjeld 4500'

123 Hæstefjeld 4500'
 124 Hæstefjeld 4500'

125 Hæstefjeld 4500'
 126 Hæstefjeld 4500'

127 Hæstefjeld 4500'
 128 Hæstefjeld 4500'

129 Hæstefjeld 4500'
 130 Hæstefjeld 4500'

131 Hæstefjeld 4500'
 132 Hæstefjeld 4500'

133 Hæstefjeld 4500'
 134 Hæstefjeld 4500'

135 Hæstefjeld 4500'
 136 Hæstefjeld 4500'

137 Hæstefjeld 4500'
 138 Hæstefjeld 4500'

139 Hæstefjeld 4500'
 140 Hæstefjeld 4500'

141 Hæstefjeld 4500'
 142 Hæstefjeld 4500'

143 Hæstefjeld 4500'
 144 Hæstefjeld 4500'

145 Hæstefjeld 4500'
 146 Hæstefjeld 4500'

147 Hæstefjeld 4500'
 148 Hæstefjeld 4500'

149 Hæstefjeld 4500'
 150 Hæstefjeld 4500'

151 Hæstefjeld 4500'
 152 Hæstefjeld 4500'

153 Hæstefjeld 4500'
 154 Hæstefjeld 4500'

155 Hæstefjeld 4500'
 156 Hæstefjeld 4500'

157 Hæstefjeld 4500'
 158 Hæstefjeld 4500'

159 Hæstefjeld 4500'
 160 Hæstefjeld 4500'

161 Hæstefjeld 4500'
 162 Hæstefjeld 4500'

163 Hæstefjeld 4500'
 164 Hæstefjeld 4500'

165 Hæstefjeld 4500'
 166 Hæstefjeld 4500'

167 Hæstefjeld 4500'
 168 Hæstefjeld 4500'

169 Hæstefjeld 4500'
 170 Hæstefjeld 4500'

171 Hæstefjeld 4500'
 172 Hæstefjeld 4500'

173 Hæstefjeld 4500'
 174 Hæstefjeld 4500'

175 Hæstefjeld 4500'
 176 Hæstefjeld 4500'

177 Hæstefjeld 4500'
 178 Hæstefjeld 4500'

179 Hæstefjeld 4500'
 180 Hæstefjeld 4500'

181 Hæstefjeld 4500'
 182 Hæstefjeld 4500'

183 Hæstefjeld 4500'
 184 Hæstefjeld 4500'

185 Hæstefjeld 4500'
 186 Hæstefjeld 4500'

187 Hæstefjeld 4500'
 188 Hæstefjeld 4500'

189 Hæstefjeld 4500'
 190 Hæstefjeld 4500'

191 Hæstefjeld 4500'
 192 Hæstefjeld 4500'

193 Hæstefjeld 4500'
 194 Hæstefjeld 4500'

195 Hæstefjeld 4500'
 196 Hæstefjeld 4500'

197 Hæstefjeld 4500'
 198 Hæstefjeld 4500'

199 Hæstefjeld 4500'
 200 Hæstefjeld 4500'

201 Hæstefjeld 4500'
 202 Hæstefjeld 4500'

203 Hæstefjeld 4500'
 204 Hæstefjeld 4500'

205 Hæstefjeld 4500'
 206 Hæstefjeld 4500'

207 Hæstefjeld 4500'
 208 Hæstefjeld 4500'

209 Hæstefjeld 4500'
 210 Hæstefjeld 4500'

211 Hæstefjeld 4500'
 212 Hæstefjeld 4500'

213 Hæstefjeld 4500'
 214 Hæstefjeld 4500'

215 Hæstefjeld 4500'
 216 Hæstefjeld 4500'

217 Hæstefjeld 4500'
 218 Hæstefjeld 4500'

219 Hæstefjeld 4500'
 220 Hæstefjeld 4500'

221 Hæstefjeld 4500'
 222 Hæstefjeld 4500'

223 Hæstefjeld 4500'
 224 Hæstefjeld 4500'

225 Hæstefjeld 4500'
 226 Hæstefjeld 4500'

227 Hæstefjeld 4500'
 228 Hæstefjeld 4500'

229 Hæstefjeld 4500'
 230 Hæstefjeld 4500'

231 Hæstefjeld 4500'
 232 Hæstefjeld 4500'

233 Hæstefjeld 4500'
 234 Hæstefjeld 4500'

235 Hæstefjeld 4500'
 236 Hæstefjeld 4500'

237 Hæstefjeld 4500'
 238 Hæstefjeld 4500'

239 Hæstefjeld 4500'
 240 Hæstefjeld 4500'

241 Hæstefjeld 4500'
 242 Hæstefjeld 4500'

243 Hæstefjeld 4500'
 244 Hæstefjeld 4500'

245 Hæstefjeld 4500'
 246 Hæstefjeld 4500'

247 Hæstefjeld 4500'
 248 Hæstefjeld 4500'

249 Hæstefjeld 4500'
 250 Hæstefjeld 4500'

251 Hæstefjeld 4500'
 252 Hæstefjeld 4500'

253 Hæstefjeld 4500'
 254 Hæstefjeld 4500'

255 Hæstefjeld 4500'
 256 Hæstefjeld 4500'

257 Hæstefjeld 4500'
 258 Hæstefjeld 4500'

259 Hæstefjeld 4500'
 260 Hæstefjeld 4500'

261 Hæstefjeld 4500'
 262 Hæstefjeld 4500'

263 Hæstefjeld 4500'
 264 Hæstefjeld 4500'

265 Hæstefjeld 4500'
 266 Hæstefjeld 4500'

267 Hæstefjeld 4500'
 268 Hæstefjeld 4500'

269 Hæstefjeld 4500'
 270 Hæstefjeld 4500'

271 Hæstefjeld 4500'
 272 Hæstefjeld 4500'

273 Hæstefjeld 4500'
 274 Hæstefjeld 4500'

275 Hæstefjeld 4500'
 276 Hæstefjeld 4500'

277 Hæstefjeld 4500'
 278 Hæstefjeld 4500'

279 Hæstefjeld 4500'
 280 Hæstefjeld 4500'

281 Hæstefjeld 4500'
 282 Hæstefjeld 4500'

283 Hæstefjeld 4500'
 284 Hæstefjeld 4500'

285 Hæstefjeld 4500'
 286 Hæstefjeld 4500'

287 Hæstefjeld 4500'
 288 Hæstefjeld 4500'

289 Hæstefjeld 4500'
 290 Hæstefjeld 4500'

291 Hæstefjeld 4500'
 292 Hæstefjeld 4500'

293 Hæstefjeld 4500'
 294 Hæstefjeld 4500'

295 Hæstefjeld 4500'
 296 Hæstefjeld 4500'

297 Hæstefjeld 4500'
 298 Hæstefjeld 4500'

299 Hæstefjeld 4500'
 300 Hæstefjeld 4500'

301 Hæstefjeld 4500'
 302 Hæstefjeld 4500'

303 Hæstefjeld 4500'
 304 Hæstefjeld 4500'

305 Hæstefjeld 4500'
 306 Hæstefjeld 4500'

307 Hæstefjeld 4500'
 308 Hæstefjeld 4500'

309 Hæstefjeld 4500'
 310 Hæstefjeld 4500'

311 Hæstefjeld 4500'
 312 Hæstefjeld 4500'

313 Hæstefjeld 4500'
 314 Hæstefjeld 4500'

315 Hæstefjeld 4500'
 316 Hæstefjeld 4500'

317 Hæstefjeld 4500'
 318 Hæstefjeld 4500'

319 Hæstefjeld 4500'
 320 Hæstefjeld 4500'

321 Hæstefjeld 4500'
 322 Hæstefjeld 4500'

323 Hæstefjeld 4500'
 324 Hæstefjeld 4500'

325 Hæstefjeld 4500'
 326 Hæstefjeld 4500'

327 Hæstefjeld 4500'
 328 Hæstefjeld 4500'

329 Hæstefjeld 4500'
 330 Hæstefjeld 4500'

331 Hæstefjeld 4500'
 332 Hæstefjeld 4500'

333 Hæstefjeld 4500'
 334 Hæstefjeld 4500'

335 Hæstefjeld 4500'
 336 Hæstefjeld 4500'

337 Hæstefjeld 4500'
 338 Hæstefjeld 4500'

339 Hæstefjeld 4500'
 340 Hæst

SALES EXHIBITION IN OSLO AUTUMN 2023
CATALOGUE 52 – II

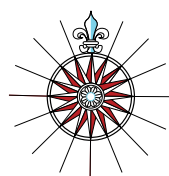
IMPORTANT ANTIQUÉ MAPS, ATLASES & ILLUSTRATED BOOKS

**OPENING RECEPTION:
TUESDAY NOVEMBER 28, AT 18.00
IN OUR EXHIBITION ROOMS, BYGDØY ALLÉ 67**

Tuesday – Friday 12 – 18, Saturday & Sunday 12 – 16

or by appointment

Pål Sagen
Tel: (+47) 928 18 465
post@galleribygdoyalles.no

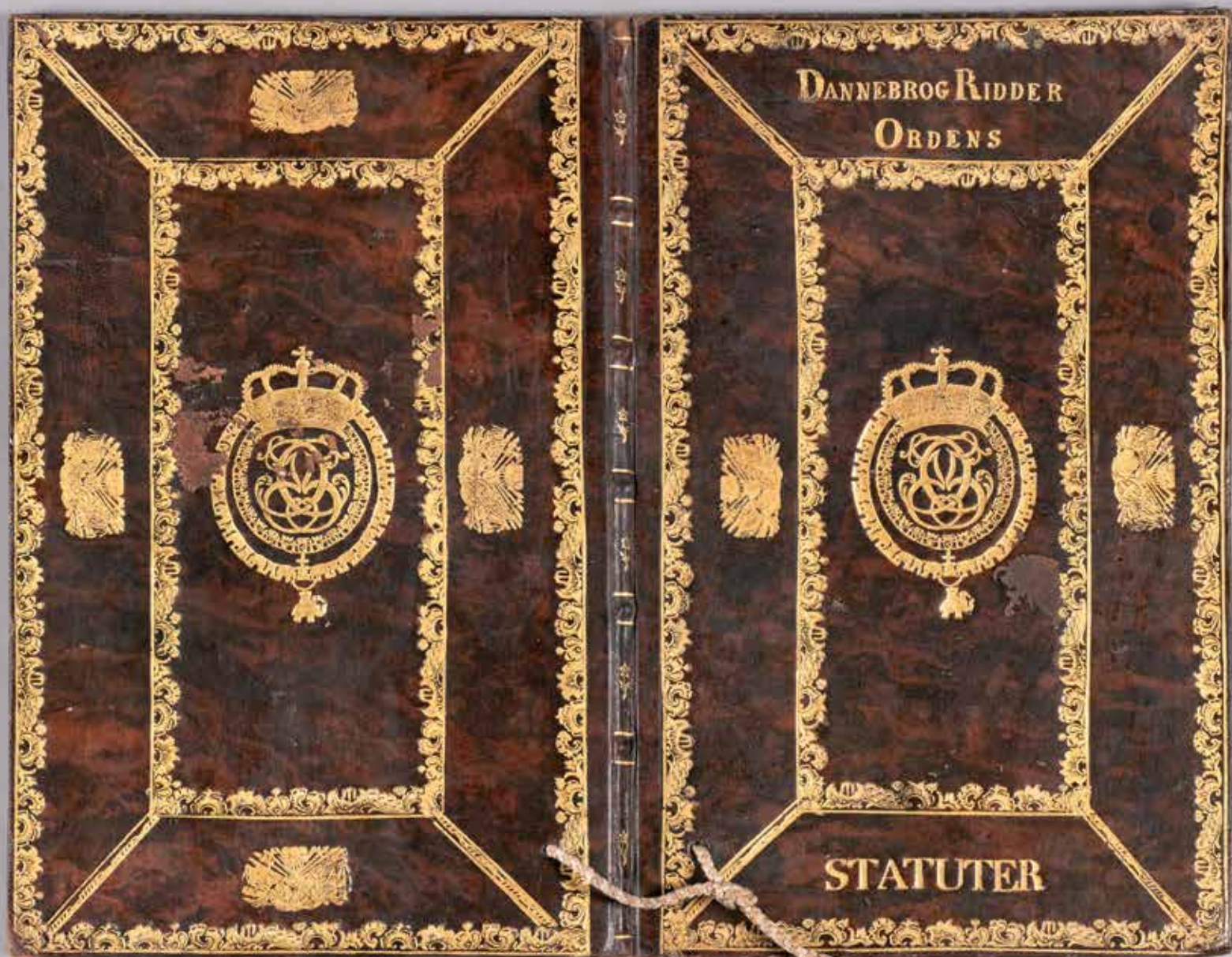


GALLERI BYGDØY ALLÉ
KUNSTANTIKVARIAT PAMA
NORSK KUNST | ANTIKKE KART OG SJELDNE BØKER | BYPROSPEKTER | HÅNDSKRIFTER



BYGDØY ALLÉ 67, 0265 OSLO, NORWAY • TLF: (+ 47) 22 44 06 00 • FAX: (+47) 22 44 06 01
E-MAIL: POST@GALLERIBYGDYOYALLE.NO • INTERNET: WWW.GALLERIBYGDYOYALLE.NO





INDEX

IMPORTANT ANTIQUE MAPS & ATLASESPAGE 6

ILLUSTRATED BOOKS: "DANNEBROGSORDEN", FLORA DANICA, PALMSTRUCK, DANISH "ADELSBREV"PAGE 43

In Catalogue 52 – II we are presenting cartographic material and illustrated books from various private collections as:
Dental surgeon Niels Nielsson Danbolt, Oslo, Nils G. Germundson, Zürich, A collector of flower books, Oslo, Ivan Bendiksen, Tønsberg, The Family Collection of Heinrich Arnold Thaulow, Røyse and other sources



TERMS AND EXPLANATIONS

All items have been carefully described and are guaranteed to be genuine and authentic.

The prices are in NOK (Norwegian kroner), all taxes included. As an indication only, the items are also priced in EURO after an approximate exchange rate of 1€ = NOK 12

Contemporary hand-coloured: In our opinion, the colouring is approximately contemporary with the date of issue. The expression "Original colour" means the same and is often used for "colouring executed by the publisher"

Hand-coloured: In our opinion, the colouring or parts of the colouring originates from a later period than the date of issue, in most cases means "modern colouring"

PLEASE NOTE:

THE CATALOGUE IS PUBLISHED SOME DAYS BEFORE THE OPENING OF THE EXHIBITION. IT IS POSSIBLE TO MAKE ORDERS FROM THE CATALOGUE PRIOR TO THE OPENING TUESDAY NOVEMBER 28, AT 6PM.

BASED ON WALDSEEMÜLLER'S LARGE 1507 WORLD MAP:
THE EARLIEST OBTAINABLE MAP TO NAME "AMERICA",
AND THE FIRST INTENDED TO ACCOMPANY A PRINTED BOOK

1. CAIUS JULIUS SOLINUS:

"IOANNIS CAMERTIS MINORITANI, ARTIUM, ET
SACRAE THEOLOGIAE DOCTORIS, IN. C.IVLII
SOLINI...(POLYHISTOR)"

Folio, 30x20,5cm. Title-page with woodcut borders, i(r),
dedication i(v) – iiiii, v, 6pp, folded map on guard (between
folio VIII and IX), 1 – 336, 1p "Errores", woodcut device of Lucas
Alantse on colophon, recto, blanc verso, 28pp Register, 1 leaf cc jii
with large printer's device verso, including the blank leaf cc jiii at
the end. (A few pages including the title-page with a small spot,
final blank with one short restored tear).

The folding cordiform woodcut map is by Petrus Apianus
(a watermark with a crown with a reversed 3 below it): "Tipus
Orbis Universalis iuxta Ptolomei Cosmographi Traditionem Et
Americi Vespucii Aliorque Lustrationen A Petro Apiano...MDXX".
(Lower margin of the map shaved with loss of "Merides", the other
three sides with unusually large margins, a faint vertical crease to the
left of the center fold).

A desirable copy of a rare and significant map.

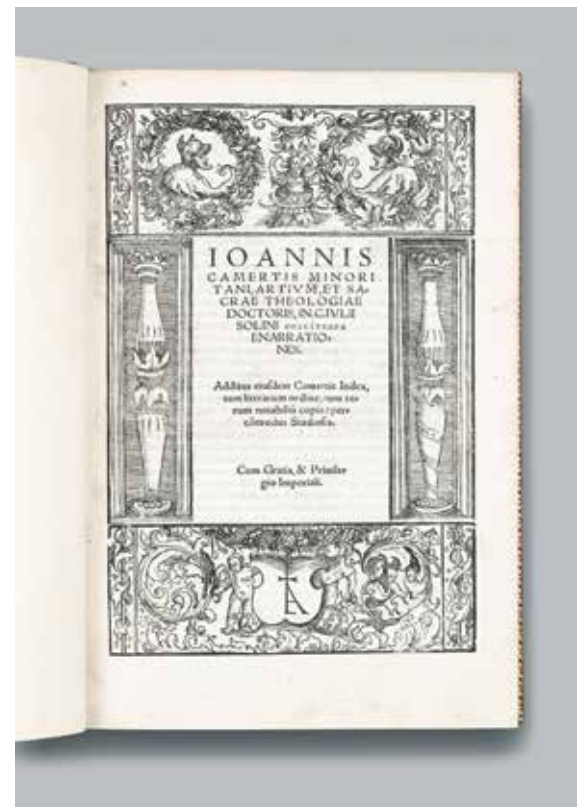
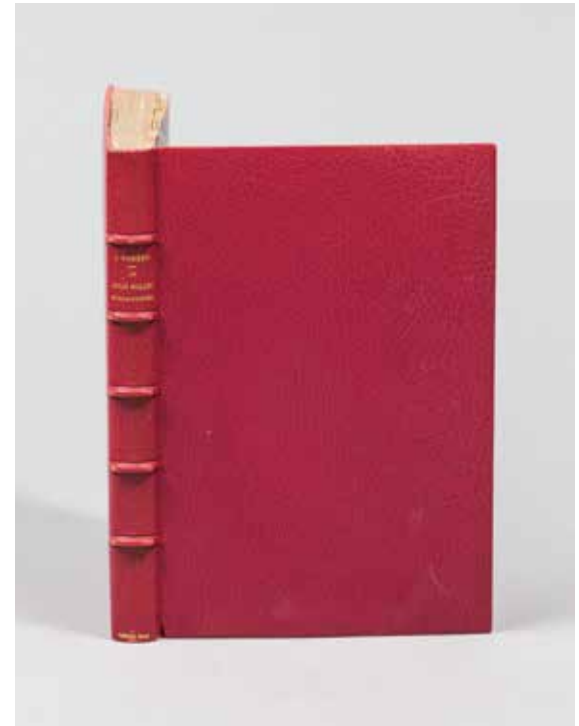
20th Century full red morocco master binding by Georges Huser
(France 1879 – 1961), elegantly signed "G. Huser", richly gilt dentelles,
marbled front and end papers, the spine in six compartments with
five raised bands, one compartment with title in gilt "J. Camers –
In Julii Solini Enarrationes", at bottom "Vienna 1520", all edges gilt
(extremities on one corner and foot of spine with just minor traces of
rubbing)

VIENNA, Johannes Singrenius for Lucas Alantse, 1520 (the World
map in its later state c. 1522, see details below)

Laurent Fries, the pupil of Apianus, whose initials are in the lower
right-hand corner of the map, was most likely responsible for the
woodcutting.

The Apianus map has long been coveted by collectors, both for its
striking beauty and for the significance of the early appearance of
"America" on a map. In fact, until the discovery in 1901 of Martin
Waldseemüller's large, 12-sheet 1507 world map (known in a single
example, now at the Library of Congress), the Apianus was believed to
be the very first map to use the name America, as well as the earliest
to use the important truncated cordiform or heart-shaped projection.
Although unacknowledged, the 1507 Waldseemüller is the source of
Apianus's map.

The map is quite rare, and often lacking in copies of the Polyhistor.
Though also added to Pomponius Mela's *De Situ Orbis* printed in Basle
in 1522, it is often lacking in copies of this work as well.



In an article in the Spring 2010 issue of the Portolan, Don McGuirk, Jr., comprehensively notes the similarities and differences between the Waldseemüller and the Apianus maps. In order to address a question regarding a later state of the Apianus map, he further performed a census of the map and its appearances in copies of both the Polyhistor and De Situ Orbis. (His census did not include our copy.) His findings led him to conclude that there was a later, separate printing of the Apianus map, probably in 1522, using the same woodblock in a somewhat more deteriorated state.

McGuirk noted three typographical differences between the two states, all of which are consistent with our map being the 1522 issue. Furthermore, McGuirk found a uniformly similar watermark on copies of the later state, and this is the watermark described above on our copy. Moreover, there was not a perfect correlation between the two books—Polyhistor and De Situ Orbis—and the states of the map. In McGuirk's census, most of the maps present in the Polyhistor were in the first state, but a few of the copies were similar to our copy in that the included map was in state 2. Similarly, state 1 of the map was occasionally found bound in copies of De Situ Orbis.

Acknowledgement: Galleri Bygdøy Allé – Kunstantikvariat PAMA wants to thank Donald L. McGuirk Jr. for his kind assistance in contributing with important information concerning the map.

Provenance: Juha Nurminen Collection Helsinki, his bookplate, acquired by him in the London trade probably shortly after 2000, Finn Wilhelmsen Collection Norway (2013); purchased from his estate by Galleri Bygdøy Allé – Kunstantikvariat PAMA AS in 2020.

A magnificent copy of the important book and map.

Literature: Sabin 86390, Shirley: "The Mapping of the World" Entry 45, The Portolan Issue 77 "Journal of the Washington Map Society" Spring 2010, Article by Donald L. McGuirk Jr. MD: The Forgotten First map with the name of AMERICA (the 1520 Apianus World Map); History, Census and Comparison with the Waldseemüller 1507 World Ma, pages 26 – 36

350 000,- (€29200)



A watermark with a crown with a reversed 3 below it



EARLY PTOLEMY MAP OF SCANDINAVIA IN CONTEMPORARY COLOUR



2. (C. PTOLEMY) - LAURENZ FRIES

(«TAB NOVA NORBEGIA ET GOTTIA») TITLE VERSO

Contemporary hand-coloured woodcut, 30,5x32cm (along top), 30,5x44,5cm (at bottom)

STRASBOURG by W. Pirkheimer and J. Koberger, 1525

RARE PERIOD COLOUR COPY.

The map is a revised version of Martin Waldseemüller's Scandinavia map 1513 – 20. First printed in Strasbourg 1522 by Fries and Grüninger, later versions are 1535 and 1541. Few copies in contemporary colours are known.

Provenance: Damms Antikvariat 2002, Kunstantikvariat PAMA 2004, acquired by the dental surgeon Niels Nielsson Danbolt

Literature: W.B. Ginsberg "Printed Maps of Scandinavia and the Arctic 1482 – 1601" Entry 6, ill. 6.3b

40 000,- (€3350)

THE PROTOTYPE MAP FOR THE MYTH OF THE NORTH THE FIRST ISSUE “A” – FIRST EDITION



3. ABRAHAM ORTELIUS (1527 – 98)

"SEPTENTRIONALIVM REGIONVM DESCRIP."

Hand-coloured engraving, 36x49cm

ANTWERP May 20th, 1570 (date on the colophone of the atlas)

THE VERY FIRST ISSUE OF A MILESTONE MAP OF SCANDINAVIA AND THE NORTH.

In 1570 Abraham Ortelius published his atlas "Theatrum Orbis Terrarum", the first atlas in the modern sense of the word. Among the fifty-three maps was a general map of the Northern Regions. In the "Septentrionalium" Ortelius gathered and melted together cartographical material and information from Nicolaus Donis, Jacob Ziegler, Olaus Magnus, Nicolo Zeno and others. The impressive map became the standard map of the region for the next 40 years. It was printed from the same copperplate until as late as 1641. The printing process and alterations to the plate can be followed during the different 8 states according to Ginsberg.

Already the first year of publication 1570 the atlas went through four printings or issues, today marked with A – D. The different setting of the Latin text verso is deciding which issue we are discussing. Only 1570A is unique for identification with the access to a single map only.

From 1570 – c. 1574 the map is identified as state 1. One distinct feature is the lack of the 8 names on the North Pole continent first added in 1592 (state 4). For further description of the different states and issues, see Ginsberg pp. 91 – 110.

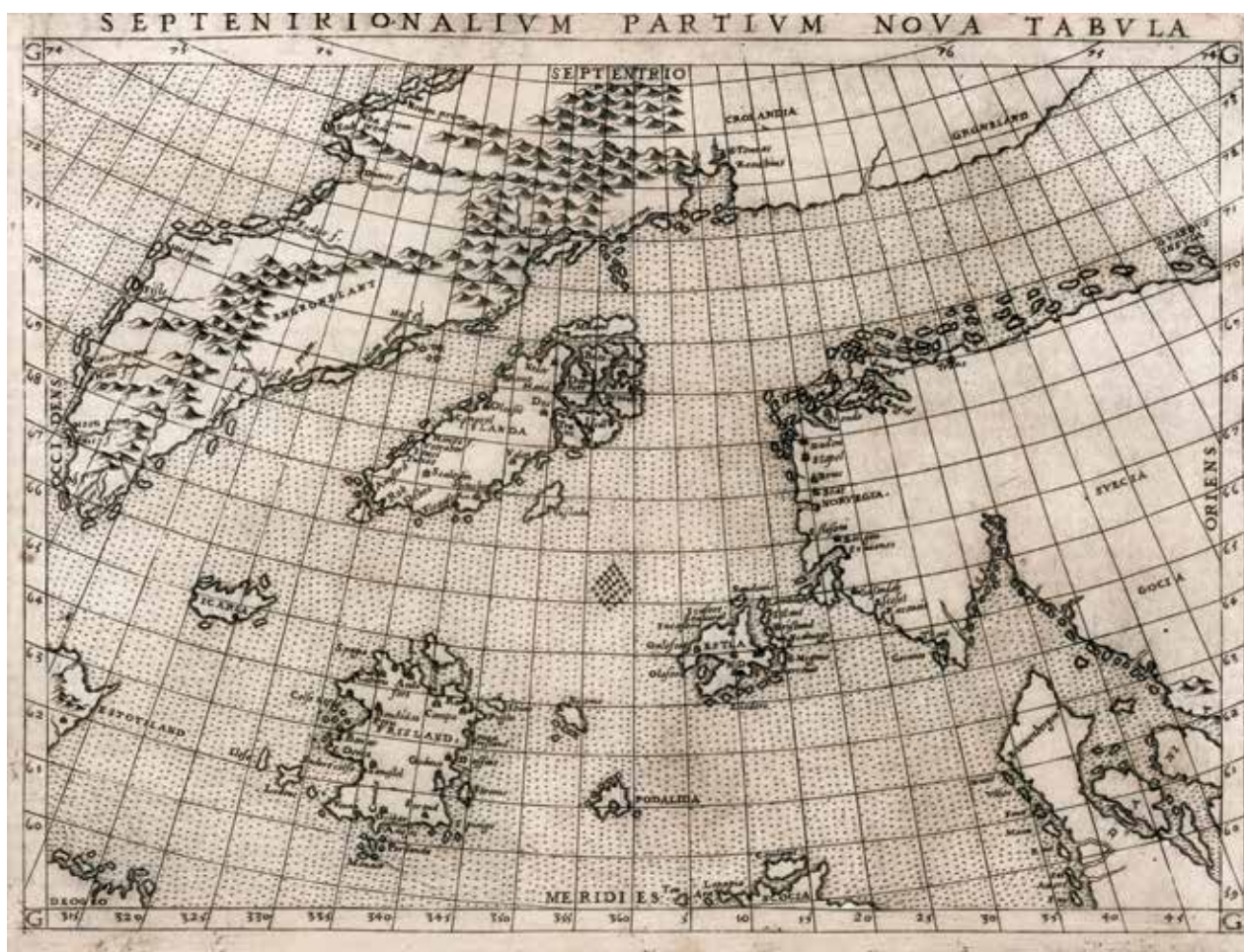
Excellent. A faint brown spot lower left only.

Provenance: Kunstantikvariat PAMA 2004, aquired by the dental surgeon Niels Nielssøn Danbolt

Literature: W.B. Ginsberg "Printed Maps of Scandinavia and the Arctic 1482 – 1601" Entry 24, Benedicte Gamborg Briså "Northward Bound At The Far Edge Of The World" Nordkappmuseet 2010, page 11 and 16 illustrated and page 40 – 41, Nasjonalbiblioteket "Kompassrosen Orientering mot nord" Oslo 2009, page 10 ill.

55 000,- (€4600)

UNUSUALLY RICH IMPRESSION



4. GIROLAMO RUSCELLI

“SEPTENTRIONALIVM PARTIVM NOVA TABVLA”

Engraved map, 18x24,5cm

Italian text verso

VENICE 1574 (First year of publication from a new plate)

This extraordinary map in the history of cartography is based on the so-called “Zeno map”, a woodcut map from 1558 which was included in a few copies of the book “De i commentari...” written by C.M. Zeno. On this map the mythical island “Frislandt” south of Iceland was depicted for the first time. Only a handful of copies of the original Zeno woodcut map is known making this Ruscelli edition the first obtainable. It was copied by Ruscelli for his Ptolemy edition in Italian 1561 and later. The Ruscelli publication gave credibility to the description of the area, and “Frislandt” was drawn on most maps of the North the next century. If we compare the original “Zeno-map” from 1558 with the Ruscelli edition the latter does not connect Greenland to the peninsula of Scandinavia.

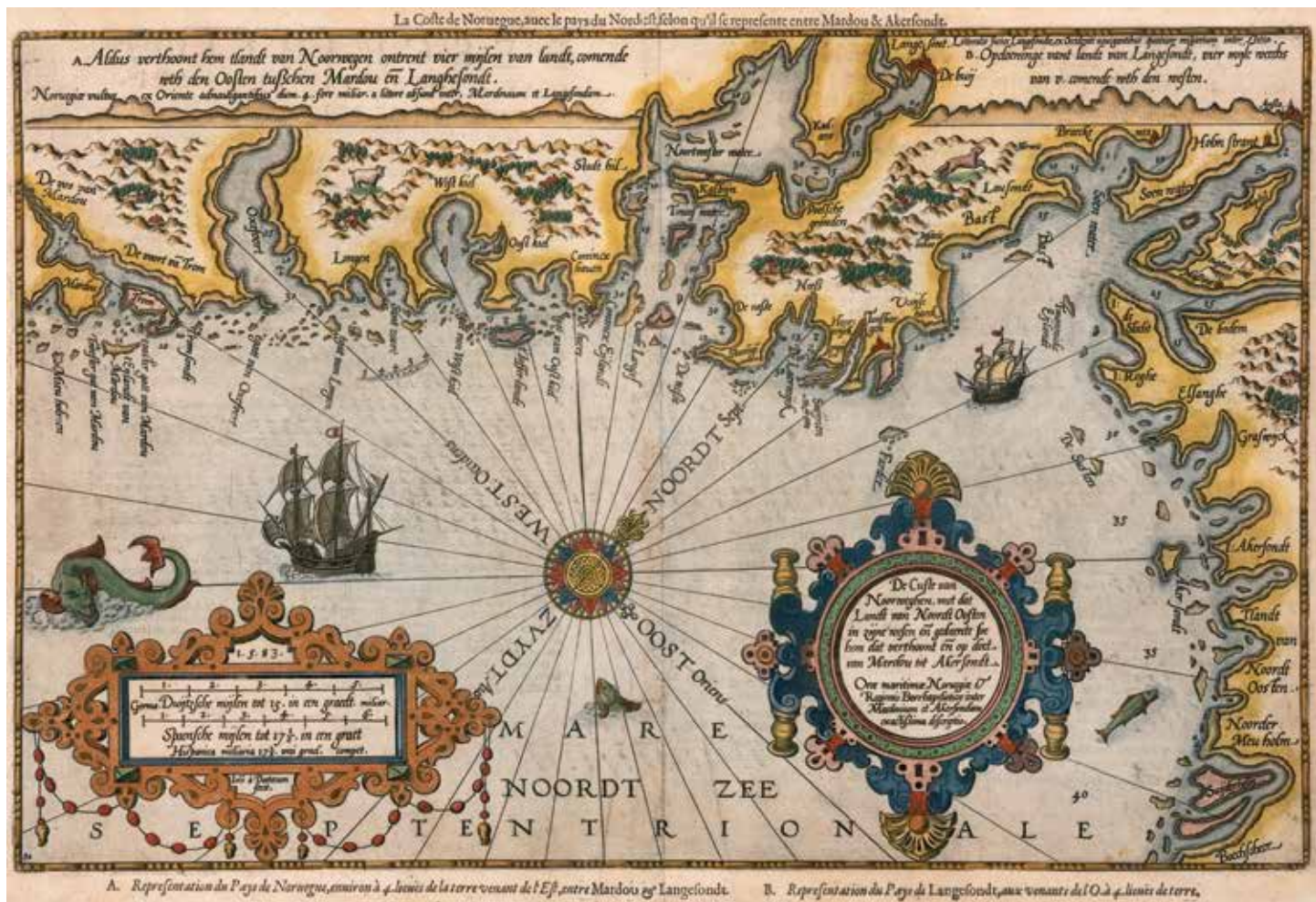
From La Geografia di Claudio Tolomeo Alessandrino Venice 1574. First printed in 1561 (Ginsberg 19) a new plate was engraved for the 1574 edition. According to Ginsberg the changes are primarily typographical. Our excellent copy in a strong and delicate early impression with plate tone.

Provenance: Antiquariat Monica Schmidt, München. From her family's private collection (by her listed as 1561), Kunstantikvariat PAMA 2004, acquired by the dental surgeon Niels Nielsson Danbolt

Literature: W.B. Ginsberg “Printed Maps of Scandinavia and the Arctic 1482 – 1601” Entry 26, fig. 19.0, P. Burden 45, Lainema – Nurminen “UltimaThule – Arktiska Upptäcktsfärder” page 98 – 99

12 000,- (€1000)

IMPORTANT SET OF THREE EARLY SEA CHARTS OF NORWAY



5. LUCAS J. WAGHENAER (1533 - 1606)

“DE CUSTE VAN NOORWEGHEN, MET DAT LANDT VAN NOORDT OOSTEN IN ZIJNE WEBEN EN GEDAENTE
SOE HEM VERTHOONT EN OP DOET VAN MARDOU TOT AKERSONDT”

Contemporary hand-coloured engraving, 33,5 x 51,5cm

AMSTERDAM (1584), but c. 1590

THE FIRST PRINTED LOCAL CHART OR MAP OF THE COASTLINE SVINESUND - OSLO - ARENDAL. A FINE OLD-COLOURED EXAMPLE.

In 1584-85 Waghenar published his book with charts which was the first real sea atlas in the World, followed by several editions in different languages. The Waghenar sea maps became so popular that the expression "Waggoner" came in use for charts in general. Most of the charts are beautifully engraved by the famous Doetecum brothers, Baptiste and Johannes. Illustrated with compass cards, animals, coastal profiles, cartouches etc. Our example has French text verso and additional typographical text in upper and lower margin.

Four restored worm holes in lower margin.

Provenance: Ivan Bendiksen's Sea Chart Collection

Literature: Koeman Wag 8a+b, MCC 691, Norges Sjøkartverk page 14 illustrated, Hoem "Norge på gamle kart" no. 29, W. B. Ginsberg "Norvegia - An Exhibit 2001" no. 76, R. V. Tooley "Map Collectors' Circle - Printed Charts of Scandinavia" no. 691

IMPORTANT SET OF THREE EARLY SEA CHARTS OF NORWAY



LUCAS J. WAGHENAER

"DIE ZEE CUSTE VAN NOORWEGHEN TUSSCHEN DER NOESS EN MARDOU"

Contemporary hand-coloured engraving, 33x50,5cm

AMSTERDAM (1584), but c. 1590

THE FIRST LOCAL CHART COVERING THE COASTLINE ARENDAL - JÆREN.

A FINE OLD-COLOURED EXAMPLE.

From a French text edition with added typographical text in upper and lower margin.

Lower margin with three restored worm holes.

Provenance: Ivan Bendiksen's Sea Chart Collection

Literature: Koeman Wag 8a+b, MCC 721, R. V. Tooley "Map Collectors' Circle - Printed Charts of Scandinavia" no. 690, W. B. Ginsberg "Norvegia - An Exhibit 2001" no. 75)

IMPORTANT SET OF THREE EARLY SEA CHARTS OF NORWAY



LUCAS J. WAGHENAER

"CUSTE VAN NOORWEGHEN TUSSEHEN BERGHEN, ENDE DE IEDDER, SOE DAT LANDT..."

Contemporary hand-coloured engraved map, 33x51,5cm

AMSTERDAM (1588), but c. 1590

THE RARE FIRST CHART OF THE COASTLINE JÆREN - STAVANGER - BERGEN.

A FINE OLD-COLOURED EXAMPLE.

First included in a Waghenaer atlas in 1588. Here from a French issue with additional typographical text in upper and lower margin.

A restored worm hole in lower margin.

Provenance: Ivan Bendiksen's Sea Chart Collection

Literature: Koeman Wag 8a+b, MCC 720, Norges Sjøkartverk p. 19 illustrated, W. B. Ginsberg "Norvegia - An Exhibit 2001" no.78, R. V. Tooley "Map Collectors' Circle - Printed Charts of Scandinavia" no. 691a, illustrated

120 000,- (€10000)

6. LUCAS J. WAGHENAER

“DIE ZEE CAERTE VAN PORTUGAL, TUSSCHEN CAMINO EN MONTEGO, ALSOE DAT LANDT ALL DAER IN SYN GHEDAENTE...”

Engraved map, 33x51,5cm

LEIDEN c. 1586

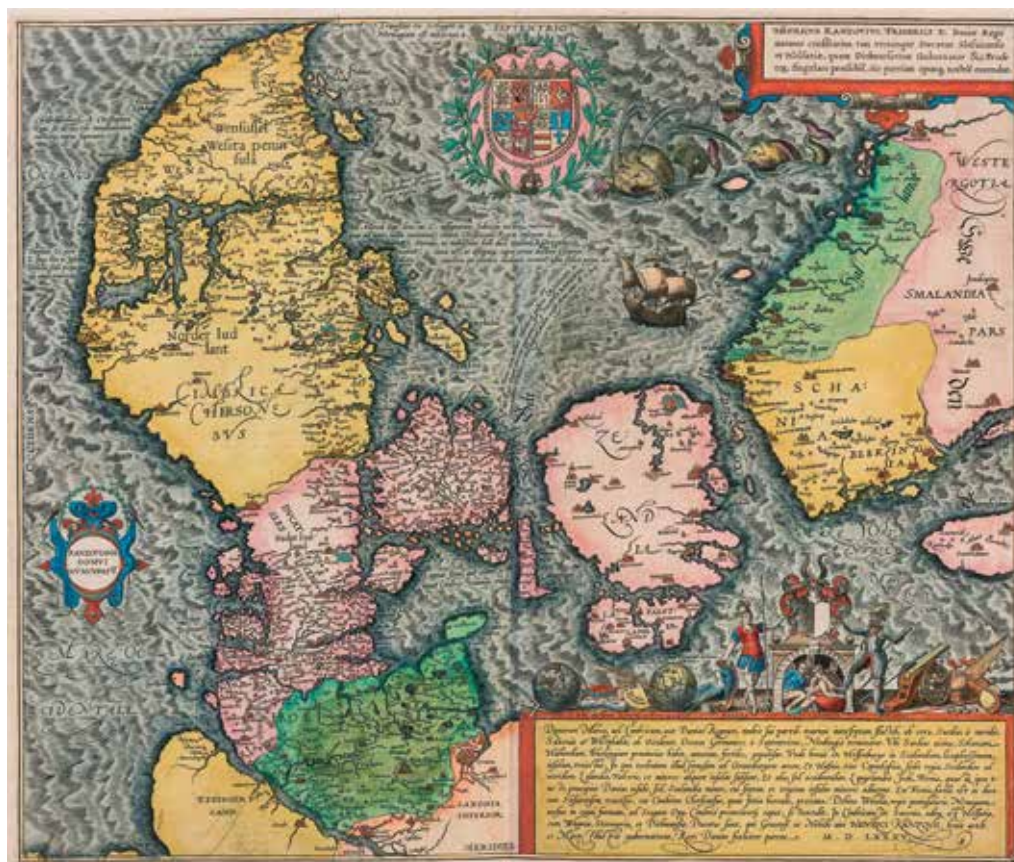
Central in this decorative and important chart is the Port district with the River Douro with Porto and Vila Nova de Gaia. Latin text verso.

Faint browning to lower margin and 2 wormholes in the area of Port. A fine impression.

10 000,- (€835)



A GORGEOUS FIRST EDITION COPY OF THE FAMOUS MAP



7. G. BRAUN – F. HOGENBERG

“DANORUM MARCA”

Contemporary hand-coloured engraving, 33x48cm

COLOGNE 1588

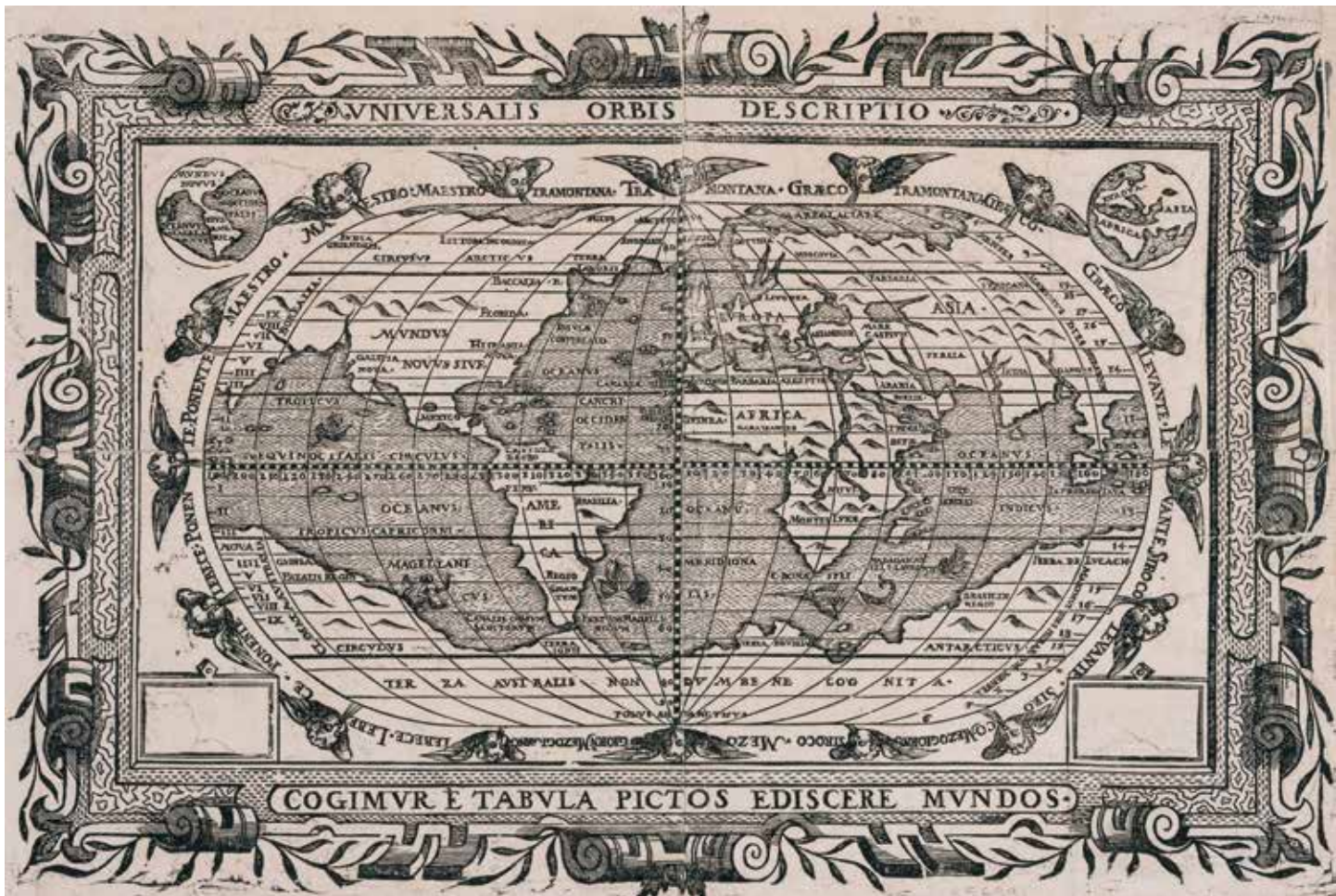
The “Danorum” is the only map published in the six-volume set of town views “Civitates Orbis Terrarum”. This is the famous “Heinrich Rantzau – Marcus Jordan map” regarded as one of the most important maps of Denmark. In superb original colours by the publisher.

Two tiny holes restored in the upper coats of arms only.

Provenance: From the Collection of Nils G. Germundson in Zürich (2016), by him acquired in Paris c. 1968

24 000,- (€2000)

“THE ONLY KNOWN PROOF COPY” (SHIRLEY, ENTRY 175)



8. JOHANNES MYRITIUS

“UNIVERSALIS ORBIS DESCRIPTIO – COGIMUR E TABULA PICTOS EDISCERE MUNDOS”

Engraved map, 27x40cm

INGOLSTADT, GERMANY 1590

Scarce folded world map in the “J. Gastaldi-type”. According to Shirley from “Oposculum Geographicum Rarum...”. Sixteen cherubic windheads encircle the world and there is a heavy decorative border. Cartographically there is no indication of a strait of Anian between America and Asia.

Condition: Folds as issued. The complete sheet laid down on thick paper also folded. Four tiny smaller cracks, some restorations affecting the two empty panels in the bottom corners, and a hole in left margin.

Literature: Rodney Shirley “The Mapping of the World” Entry 175 – this actual proof copy is mentioned with provenance Richard B. Arkway Inc. New York. With empty panels in the bottom corners, normally these would contain quotations from Cicero. As far as we know no other copies in this state are known.

20 000,- (€1650)

IMPORTANT MAP OF EUROPE IN ORIGINAL COLOURS



9. GERARD & CORNELIS DE JODE

“NOVA TOTIVS EVROPAE TABULA”

Contemporary hand-coloured engraving, 33x44cm

ANTWERP 1593

This extraordinary and decorative map of Europe was included in De Jode's second edition 1593 only.

It replaced the map of Europe from the 1578 edition which is similar to the map of Ortelius from 1570. The focusing on the cartography of the north is interesting. There is a massive landmass “Nova Zemlja” and a Strait of Waygats. The map was obviously studied by the forthcoming explorers like Petrus Plancius and Willem Barents searching for a potential north-east passage. The date on the map is a printer's error 1613 instead of 1593.

In excellent condition, only faint traces of colour offsetting.

Provenance: Kunstantikvariat PAMA 2004, acquired by the dental surgeon Niels Nielsson Danbolt.

Literature: Koeman De Jode 2, Van der Heijden: “De Oudste gedrukte Kaarten van Europa” no.37)

80 000,- (€6650)

10. ABRAHAM ORTELIUS (1527 - 98)

"SEPTENTRIONALIVM REGIONVM DESCRIP."

Contemporary hand-coloured engraving, 36x49cm
ANTWERP 1602

Same map as described under entry 3, but here the Spanish text edition page no. 105 and is state 6 (of 7) according to Ginsberg. Among the changes are the added eight place-names in the polar island. Slightly age-toned. A couple of water stains in upper margin, here also an old ink inscription "Ortelius 1580". An old decorative frame.

Provenance: The collection of dental surgeon Niels Nielssøn Danbolt.

Literature: W.B. Ginsberg "Printed Maps of Scandinavia and the Arctic 1482 - 1601" Entry 24, state 6, "Old" Koeman III, Ort 34, Benedicte Gamborg Briså "Northward Bound At The Far Edge Of The World" Nordkappmuseet 2010, page 11 and 16 illustrated and page 40 - 41, Nasjonalbiblioteket "Kompassrosen Orientering mot nord" Oslo 2009, page 10 ill.

12 000,- (€1000)



11. GERARD MERCATOR - J. HONDIUS

"POLUS ARCTICUS CUM VICINIS REGIONIBUS"

Contemporary hand-coloured engraving, 13,5x18,5cm
AMSTERDAM 1607

FIRST EDITION IN ORIGINAL COLOUR.

The reduced North Pole map of the second state of Gerhard Mercator's Septentrionalium Terrarum, though there are a couple of noticeable differences. The map itself extends only down to the Arctic Circle and the small inset maps at the top of the Faeroes and Frisland have been reversed. Published in Mercator-Hondius Atlas Minor, first edition with Latin text and no page number verso.

Excellent.

Provenance: Kunstantikvariat PAMA 2009, acquired by the dental surgeon Niels Nielssøn Danbolt

Literature: P. Burden "The Mapping of North America" 154, Kershaw "Printed Maps of Canada" entry 25a

10 000,- (€835)



THE CLASSIC CARTOGRAPHIC ICON FROM THE GOLDEN AGE OF DUTCH MAP MAKING



12. WILLIAM JANZOOM BLAEU (1571 - 1638)

“NOVA TOTIUS TERRARUM GEOGRAPHICA AC HYDROGRAPHICA TABULA”

Contemporary hand-coloured engraving, 41x54,5cm

AMSTERDAM c. 1640 – 44

AN EXCELLENT, FRESH EXAMPLE IN ORIGINAL COLOURS OF THE FAMOUS “MERCATOR-PROJECTION WORLD MAP”.

The first World map by Blaeu, in use until it was replaced by the double hemisphere map in “Atlas Major” c. 1659 and later. The engraver is Josua van den Ende. First published c. 1606 as a separate sheet, in an atlas from c. 1630. Our copy is a Latin text edition “Atlas Novus” from c. 1635. The map is the finest example of cartography as art. The border panels on all four sides show the five known planets with the sun and the moon, symbols of the four elements and the four seasons. Lower border has the Seven Wonders from the Ancient World. Decorative elements consisting of ships, sea monsters and compass cards. Depicted is the interest in and the exploration of a North-East passage.

Latin text, signature 1A, according to Koeman date 1640 or 1644

A very good copy with wide margins.

Provenance: Kunstantikvariat PAMA 2009, acquired by the dental surgeon Niels Nielssøn Danbolt

Literature: R. Shirley “Mapping of the world” no. 255, state 4, “Old” Koeman 21A or 23A, F. C. Wieder “The Dutch Discovery and mapping of Spitsbergen 1596 - 1829” no. 56

120 000,- (€10000)



13. WILLIAM J. BLAEU

«REGIONES SUB POLO ARCTICO»

Contemporary hand-coloured engraving, 41x53cm

AMSTERDAM c. 1649

A fine map of the Arctic. Verso German text and page signature B2.

A faint brown spot on the right and side.

Provenance: From the collection of the dental surgeon Niels Nielssøn Danbolt, Oslo

Literature: «Old» Koeman volume I, entry B1 33 (German text edition B2)

7 500,- (€625)



14. WILLIAM J. BLAEU

«TABULA ISLANDIÆ AUCTORE CAROLO FLANDRO.»

Contemporary hand-coloured engraving, 38x49,8cm

AMSTERDAM c. 1640

A fine large paper copy.

Provenance: Kunstantikvariat PAMA 2003, acquired by the dental surgeon Niels Nielssøn Danbolt

7 500,- (€625)



This is a highly detailed historical map of Europe, titled "EVROPA recens descripta a Gulielmo Blaeuw" (Europe recently described by Willem Blaeuw). The map is oriented with North at the top. It shows the continent of Europe with its major cities, rivers, and surrounding seas. The map is framed by a decorative border featuring various figures and scenes. The title is in the upper right corner. The map is oriented with North at the top, and the title is in the upper right corner.

«EUROPA RECENS DESCRIPTIO»

AMSTERDAM 1644

The finest copy of the Europe map ever presented by Galleri Bygdøy Allé – PAMA.

60 000,- (€5000)

«MARGINS RULED IN RED»

16. MOSES PITT (ENGLAND DIED 1684)

«SUECIÆ, NORVEGIÆ, ET DANIÆ NOVA TABULA»

Contemporary hand-coloured engraving, 47,3x47,5cm

OXFORD 1680

From volume I of Moses Pitt's ambitious «The English Atlas». The intention of the project was to compete with the Grand Atlases by the Dutch map companies Janssonius and Blaeu. But due to serious financial problems it failed after volume IV. This map was included in the first part and the copper plate is that of Janssonius from c. 1640.

In the margins around the map, we see a hand-drawn double line in red-brown colour (slightly oxidized). Red-ruling was a popular practice among English nobility and social elites during 1670s and 1680s. To whom Moses Pitt had most of his customers.

In a typical English black frame with gilt borders.

Provenance: From the collection of the dental surgeon Niels Nielsson Danbolt, Oslo

6 000,- (€500)



«MARGINS RULED IN RED»

16A. MOSES PITT (DIED 1696)

“A MAP OF THE NORTH-POLE AND THE PARTS ADJOINING”

Contemporary hand-coloured engraving, 46x58cm

OXFORD 1680

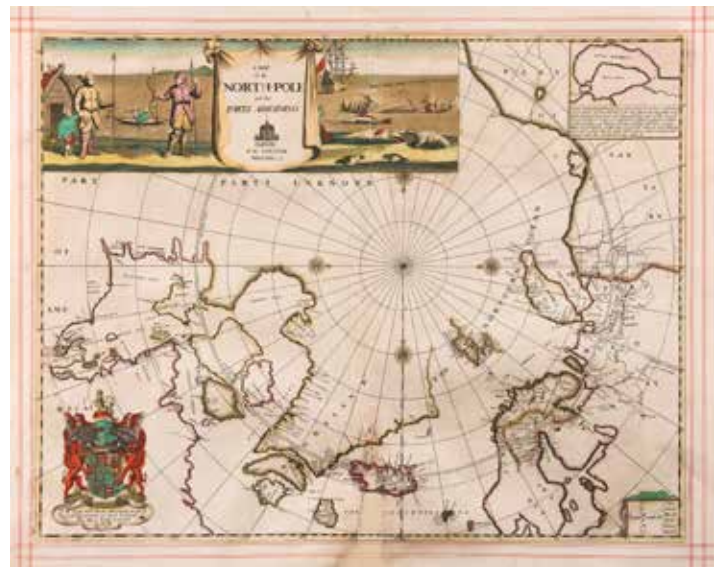
ONE OF THE MOST ATTRACTIVE ENGLISH MAPS OF THE ARCTIC REGIONS.

Although it is cartographically based on the Janssonius Arctic map, this is one of few in the Pitt atlas which is an original work by Moses Pitt. The title-cartouche shows scenes from whaling, two vignettes of Eskimos and their kayaks, further illustrations of walruses, whales and narwhales. The large coat of arms belongs to the Earl of Plymouth.

A paper restoration in lower centrefold, a few creases.

Literature: Kenneth A. Kershaw "Printed Maps of Canada 1540 – 1703" entry 120

25 000,- (€2080)



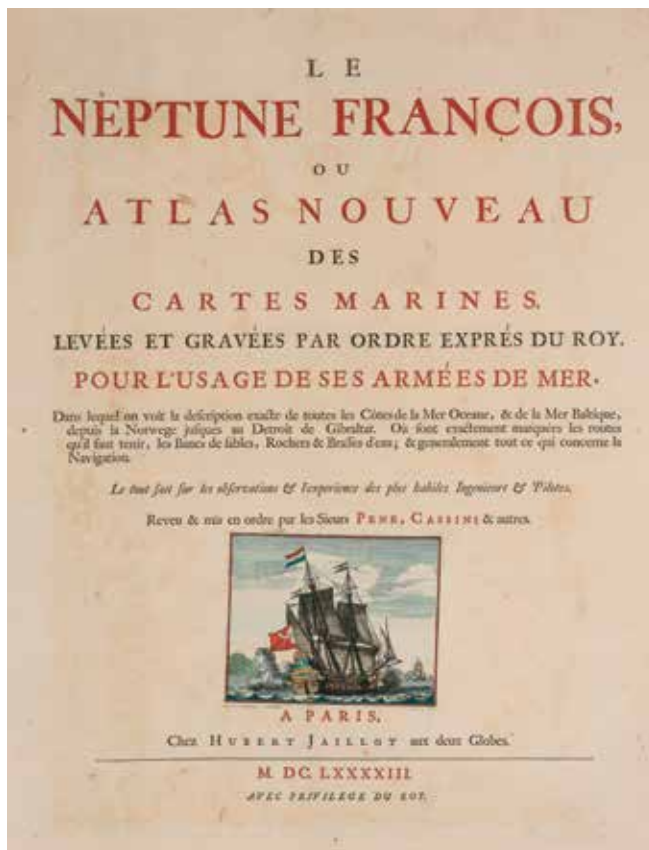
TWO SEA ATLASES BY PIETER MORTIER IN ONE VOLUME

"THE MOST SPECTACULAR TYPE OF MARITIME CARTOGRAPHY
EVER PRODUCED IN 17TH CENTURY AMSTERDAM" (KOEMAN)

FLOURISHINGLY COLOURED AND HEIGHTENED IN GOLD.

ACQUIRED IN OSLO 1966





17. PIETER MORTIER

“LE NEPTUNE FRANCOIS OU ATLAS NOUVEAU DES CARTES MARINES. LEVÉES ET GRAVÉES PAR ORDRE EXPRÉS DU ROY. POUR L'USAGE DE SES ARMÉES DE MER”

Full-page engraved frontispiece, title-page with a ship-vignette, 3 large plates of ships, calender-engraving, 6pp text and index, and 29 double-page charts of the European coast from the Baltic to North Africa. The double-page maps measure c. 58x94cm. PARIS, Chez Hubert Jaillot aux deux Globes, 1693



+ “ATLAS MARITIME – CARTES MARINES A L'USAGE DES ARMÉES DU ROY DE LA GRANDE BRETAGNE. ..GRAVÉES 6 RECUEILLIES PAR DE SR. ROMAIN DE HOOGE COMMISSAIRE DE SA MAJESTÉ.”

TWO SETS OF SEA CHARTS TO FORM ONE OF THE MOSTLY ADMIRRED SEA ATLASES FROM THE LATE 17th CENTURY.

Full-page engraving, title-page with list of charts and a ship vignette, and 9 engraved sea charts in Mercator projection (6 are double-page, c. 58x94cm, and 3 are single-page) of the coastlines of England, France, and the Mediterranean.

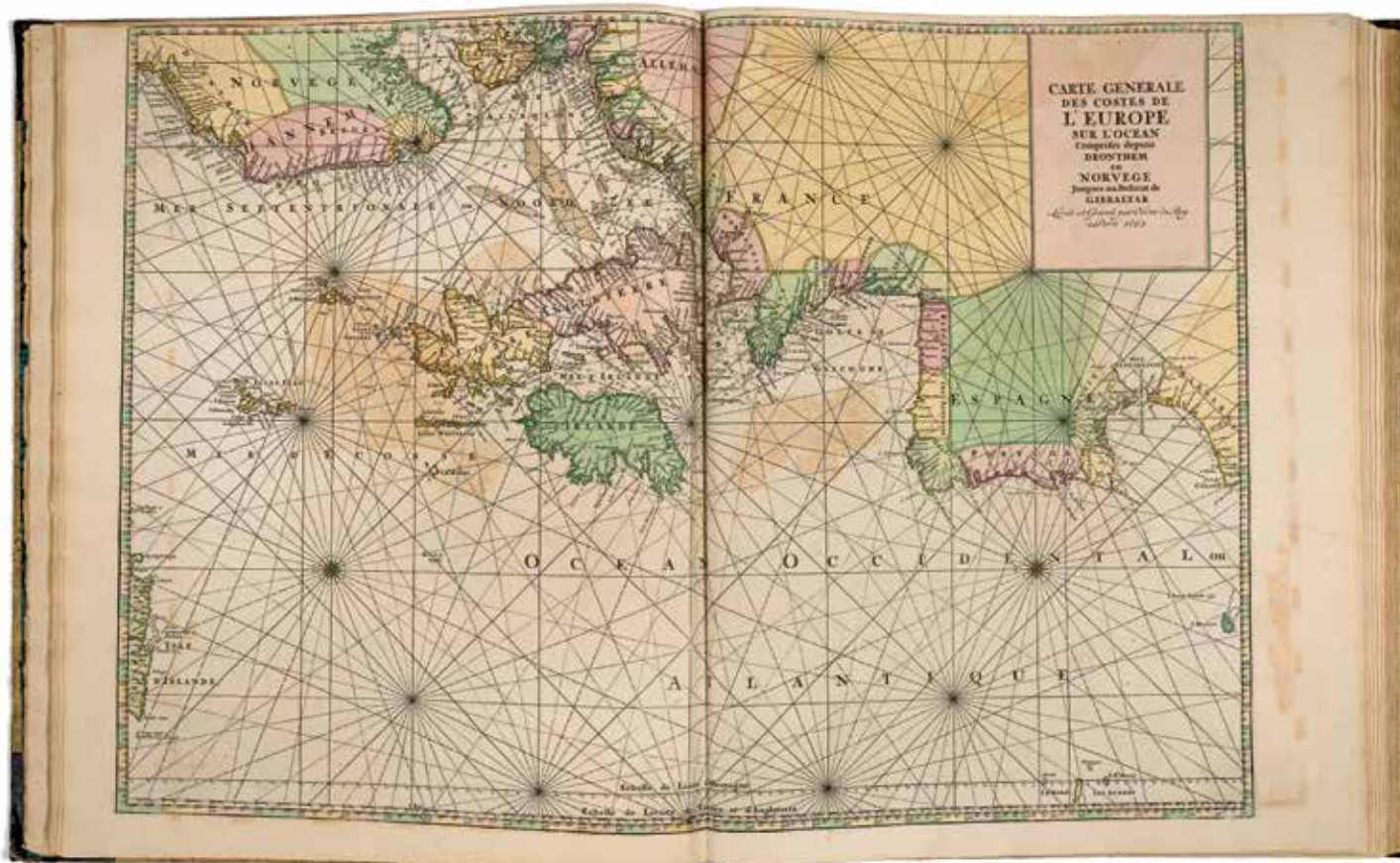


THE CHARTS IN THIS PART ARE ENGRAVED BY THE FAMOUS DUTCH ARTIST ROMEYN DE HOOGE
AMSTERDAM, Chez Pierre Mortier Libraire sur le Vygen Dam, 1693

Two parts in one volume, elephant folio, 61,6x49,2cm.

18th century / early 19th century half calf patterned paper boards.

TOGETHER: 2 LARGE FRONTISPIECES, TWO VIGNETTES DEPICTING DUTCH SHIPS SAILING, PLATE OF CALENDER, 3 LARGE SHIP ENGRAVINGS, AND 34 ENGRAVED CHARTS. ALL FINELY COLOURED BY A CONTEMPORARY HAND AND EXTENSIVELY HEIGHTEND IN GOLD.





The printing history of the first part "Le Neptune Francois" is somewhat complex. It was first published in Paris by Hubert Jaillot "Imprimerie Royale" 1693. Then in 1693 – 94 Pieter Mortier counterfeited the atlas. He had all the charts precisely copied and re-engraved, and changed the imprint on the charts. It was published with the title-page imprint: "A Paris, chez Hubert Jaillot aux deux Globes 1693". The reason for this was the fact that Jaillot was Mortier's joint-publisher. The counterfeited copy caused confusing among the customs when it was exported into France (see Koeman p. 424). A reason to publish the atlas under the Paris umbrella was pure marketing. A prestige French atlas would better sell with a Parisian imprint.

The 9 charts in second part by Romeyn de Hooghe are among the most famous sea maps created. The cartographical information combined with the artistic elements and topographical views make the set to special work of art. The condition is in general very good (see condition report below). The last folding chart of The Mediterranean (the left part of our copy damaged with loss of the folded part) is a core chart of the region.

Condition: First part, "Le Neptune Francois": Some offsetting on the charts. One leaf in the register with a corner restoration in the blank margin. Marginal spot on chart no. 23. Chart 3 and 4 in changed order according to Koeman. Chart 13, the folded "Carte du Golfe", has a clean tear c. 15cm in connection with a fold, no loss. Upper margin trimmed affecting a few charts only, just touching the grade scale.

Second part, "Atlas Maritimus": In connection with the book binder's work the upper and left-hand side margins have been reduced, a few charts shaved touching the grade scale. Left hand-part, c. 23 cm (the fold) of the last chart no. 9, "Mediterranean", torn and lost. A marginal restoration in lower right corner.

In total a magnificent atlas.

Literature: "Old" Koeman "Maritime Atlases": M. Mor 1 + 5, Koeman listing II + III, see page 424, William B. Ginsberg "Sea Charts of Norway 1585 – 1812", three charts of Norway listed as 13A.1a, -2a, and -3a

Provenance: Damms Antikvariat, Oslo. Purchase price NOK 25000 in 1966, sold to a private collector in Oslo within shipping, owned by the same family to present day (original receipt is present in the book)

250 000,- (€20 800)



MAPS AS «WORKS OF ART» BY ROMEYN DE HOOGHE

RARE PAIR IN MINT CONDITION OF THE SOUTH COAST OF ENGLAND AND WALES



18. PIETER MORTIER – ROMEYN DE HOOGHE

“CARTE NOUVELLE DES COSTES D'ANGLETERRE DEPIUS LA RIVIÈRE DE LA TAMISE JUSQUES À PORTLAND, & DES ISLES VOISINES: OU L'ON VOIT TOUS LES PORTS DE MER, BANCs DE SABLE, & ROCHERS. A L'USAGE DES ARMÉES DE SA MAJESTÉ BRITANNIQUE...”

Contemporary hand-colored engraving, 58,3x95cm
From London - Mouth of Thames via Dover to Bournemouth - Portland, with a detailed insets of the Canal from Calais and Dunquerque to Dover and Mouth of Thames. Detailed views of Portsmouth and Rochester.

+ “CARTE MARITIME DE L'ANGLETERRE DEPUIS LES SORLINGUE'S JUSQUES À PORTLAND OÙ L'ON VOIT LES COSTES ET PORTS DE MER, BANCs DE SABLE, EMBOUCHURES DE RIVIERES & À L'USAGE DES ARMÉES DU ROY DE LA GRANDE BRETAGNE”

Contemporary hand-colored engraving, 58,3x95cm
From Portland – Dorchester to St. Ives. Inset of Isles of Scilly (St. Agnes, St. Mary's, St. Martin's etc)

AMSTERDAM, Pieter Mortier, 1693

EXTRAORDINARY COPIES IN GORGEOUS ORIGINAL COLOURS.

“THE MOST SPECTACULAR TYPE OF MARITIME CARTOGRAPHY EVER PRODUCED IN 17TH CENTURY AMSTERDAM” (See Koeman)

The engravings executed by the famous artist, painter, engraver, and sculptor Romeyn de Hooghe (Amsterdam 1645 – Harlem 1708).

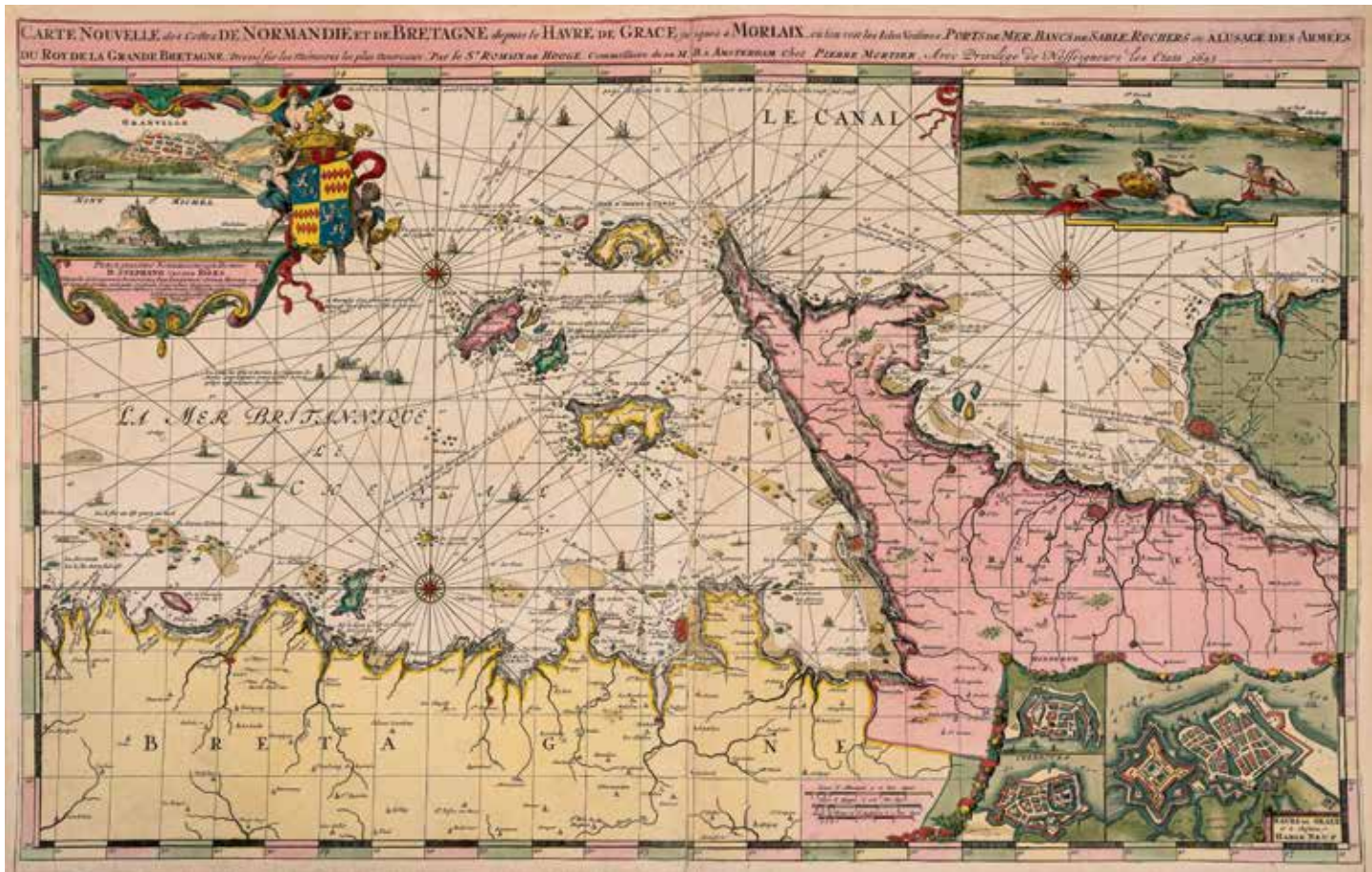
See also our entry 6 and the Atlas “Le Neptune Francois”.

Literature: See “Old” Koeman vol. IV, M. Mor 5

Provenance: Private collection Germany

60 000,- (€5000)

THE EXTRAORDINARY CHART OF THE BRITISH CHANNEL



19. PIETER MORTIER - ROMEYN DE HOOGE

"CARTE NOUVELLE DES COSTES DE NORMANDIE ET DE BRETAGNE DEPUIS LE HAVRE DE GRACE JUSQUES À MORLAIX, OÙ L'ON VOIT LES ISLES VOISINES PORTS DE MER, BANCs DE SABLE. ROCHERS ETC À L'USAGE DES ARMÉES DU ROY DE LA GRANDE BRETAGNE"

Contemporary hand-colored engraving, 58,5x94,5cm
AMSTERDAM, Pieter Mortier, 1693

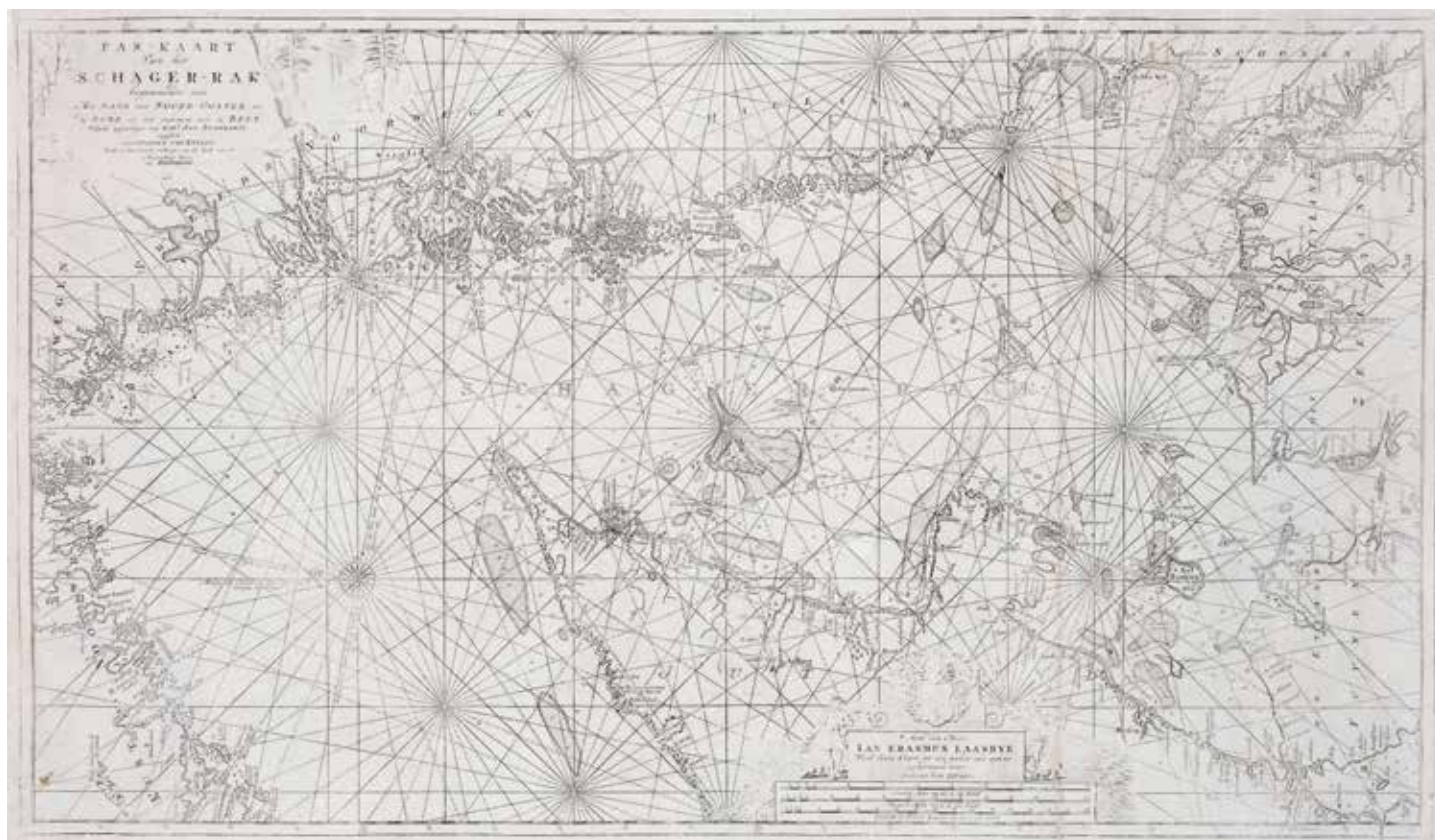
From the same atlas set as the pair above.

Extending from Le Havre to Cherbourg. Insets of Granville, Mount St. Michel, "Baye de la Hogue" and "Cote d Calvados".

Provenance: Private collection Germany

30 000,- (€2500)

ONE OF THE SCARCE LARGE SEA CHARTS OF SCANDINAVIA



20. JOHANNES II VAN KEULEN

«PAS-KAART VAN HET SCHAGER-RAK BEGINNENDE VAN HET LAND VAN NOORD-OOSTEN, TOT DE SOND HET INKOMEN VAN DE BELT. VOLGENS OPGEEVINGE VAN CAPT. JAN BRANDARIS...AAN DEN HEER IAN ERASMUS LAASBYE»

Engraved chart, 58x100cm

AMSTERDAM c. 1746 – 1755

The large sea chart by Van Keulen depicting the entire Swedish west coast as well as the coastline Færder – Arendal. «The large chart of the Skagerrak with Jutland jutting prominently in the center shows the Norwegian coast east and west of the Oslo Fjord but does not actually extend far north enough to include Oslo» (Ginsberg page 157)

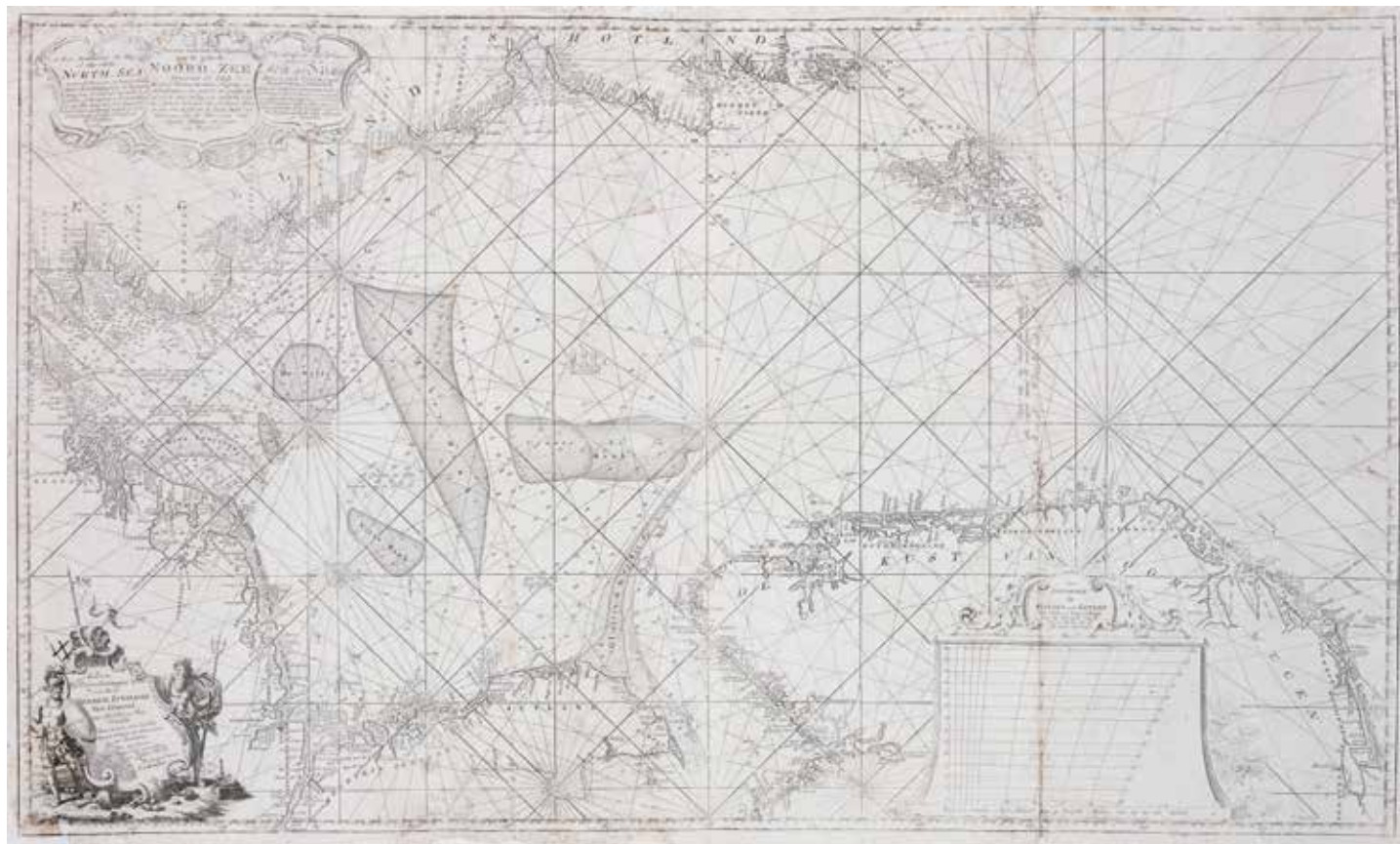
Condition: Partly weak impression as often the case with these kind of large van Keulen sea charts, some wormings filled in, and some other professional restorations are making a good visible impression.

Provenance: Private collection in Spain

Literature: William B. Ginsberg «Sea Charts of Norway 1585 – 1812» Entry 8B:12

15 000,- (€1250)

ANOTHER OF THE SCARCE LARGE SEA CHARTS OF SCANDINAVIA



21. JOHANNES II VAN KEULEN

«A NEW REDUCED SEA MAP OF THE WHOLE NORTH SEA SHEWING ALL THE RIVERS, HARBOURS, GROWNDS, DEPTHS AND ANCHORING PLACES IN THE SAME...ACCORDING TO THE EXPERIENCE OF SEVERAL FISHERS OF MASELAN. SLUCE, AND FROM TEXEL TO THE SOUTH COAST OF NORWAY, ACCORDING TO THE OBSERVATIONS OF CAPT. J. HEYTEMAN OF CHRISTIANIA» (TITLE UPPER LEFT, REPEATED IN DUTCH AND FRENCH)

Engraved chart, 59,3x100,3cm

AMSTERDAM c. 1742 – 1755

Large sea chart drawn on Mercator's projection by the important sea chart publisher Van Keulen. According to Ginsberg page 169 this is the final version of a group of sea charts of the North Sea. Lower left a cartouche with a dedication to Lord Hendrik Lynslager, Vice Admiral of Holland and West Friesland.

Some of these large charts by Van Keulen were probably separately published and are rarely seen for sale. Probably most copies were used in board in practical sailing. The few copies observed seem all to have some condition issues. Our copy has marginal restorations and some outer lines have been filled in. An area in the sea north of Vriesland filled in. Some other small areas within the map restored as well as browning along the fold on the right hand side. But in general a very acceptable condition for a chart like this professionally restored.

Provenance: Private collection in Spain

Literature: William B. Ginsberg «Sea Charts of Norway 1585 – 1812» Entry 8D.5a

15 000,- (€1250)

UNIQUE 18TH CENTURY DANISH – NORWEGIAN MANUSCRIPT MAP OF FINNMARK



22. ANONYMUS, NORWEGIAN (?) MAP MAKER C. 1750 – 1800

“SITUATIONS TEGNING OVER VARDØE AMT BÆSTAAENDE AF ØST OG VEST FINMAR(K)...”

Pen and watercolour on a two sheets paper joined, 44x104cm

Probably drawn in NORWAY c. 1750 – 1800

EXTREMELY RARE AND IMPORTANT 18th CENTURY MANUSCRIPT MAP OF FINNMARK.

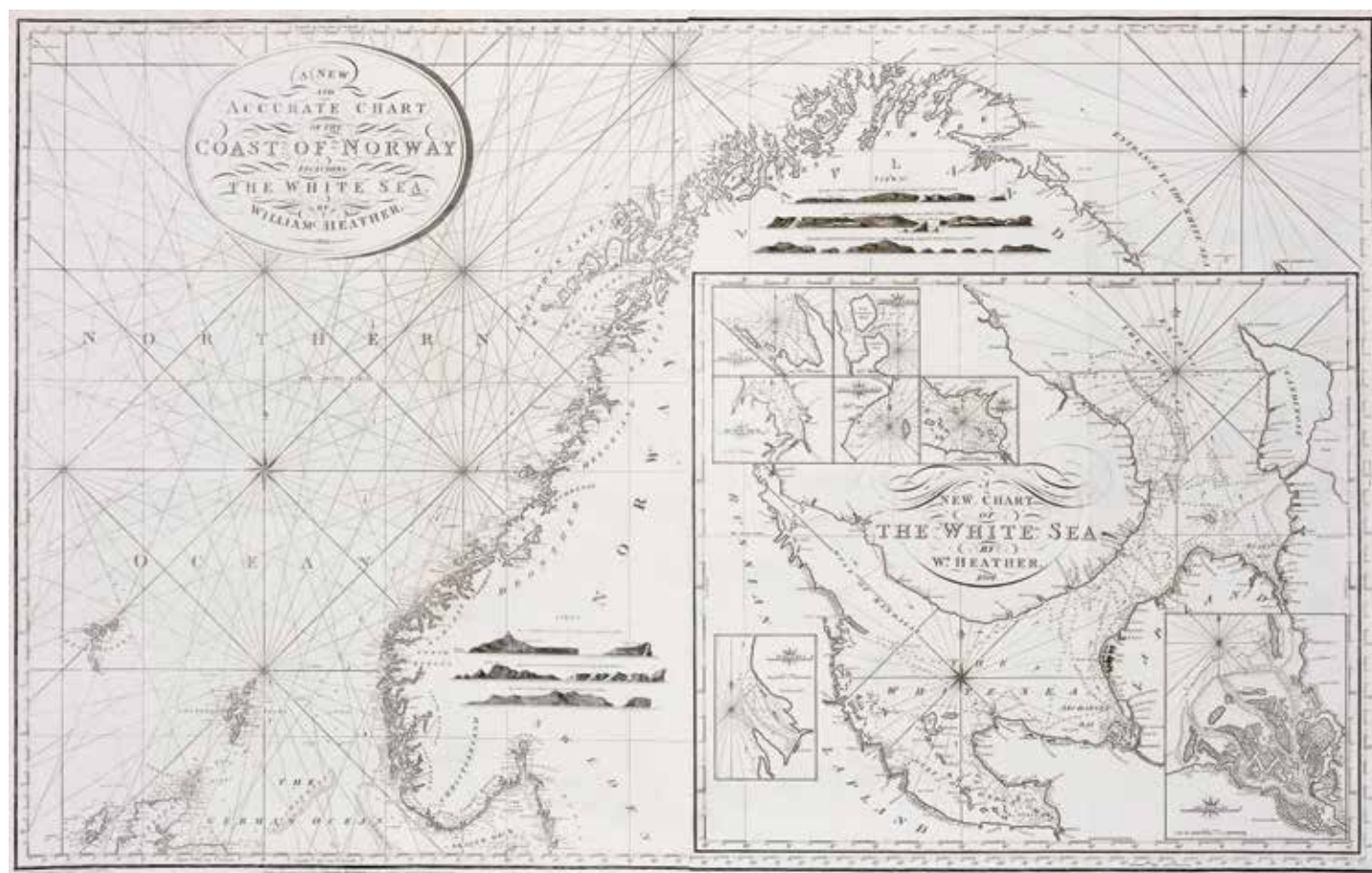
We have not been able to trace who drawn this detailed map of “Vardøe Amt”. There is no indication it is based on a known printed map. But we must assume it was made for a special mission and it is most likely drawn by a professional Norwegian hand. The entire coastline extending from Vest-Finnmark to Russia has a wealth of density of local names.

18th Century manuscript map material depicting Finnmark or even other parts of Norway is rarely offered for sale.

Some tears and damages within the map, also affecting the title, these are partly restored, the original paper laid down. Spots and browning all over, but for a piece like this still decent.

60 000,- (€5000)

ENGLISH TRADING ROUTES AT SEA TO NORWAY AND RUSSIA



23. WILLIAM HEATHER (ENGLAND 1764 - 1812)

«A NEW AND ACCURATE CHART OF THE COAST OF NORWAY INCLUDING THE WHITE SEA.»

The detailed inset: New Chart of The White Sea By W. Heather 1801

Engraving, two plates joined, 78x124cm

LONDON, engraved by Stephensen, 1801

RARE DETAILED CHART OF NORWAY AND THE WHITE SEA IN A SUPURB FRESH CONDITION.

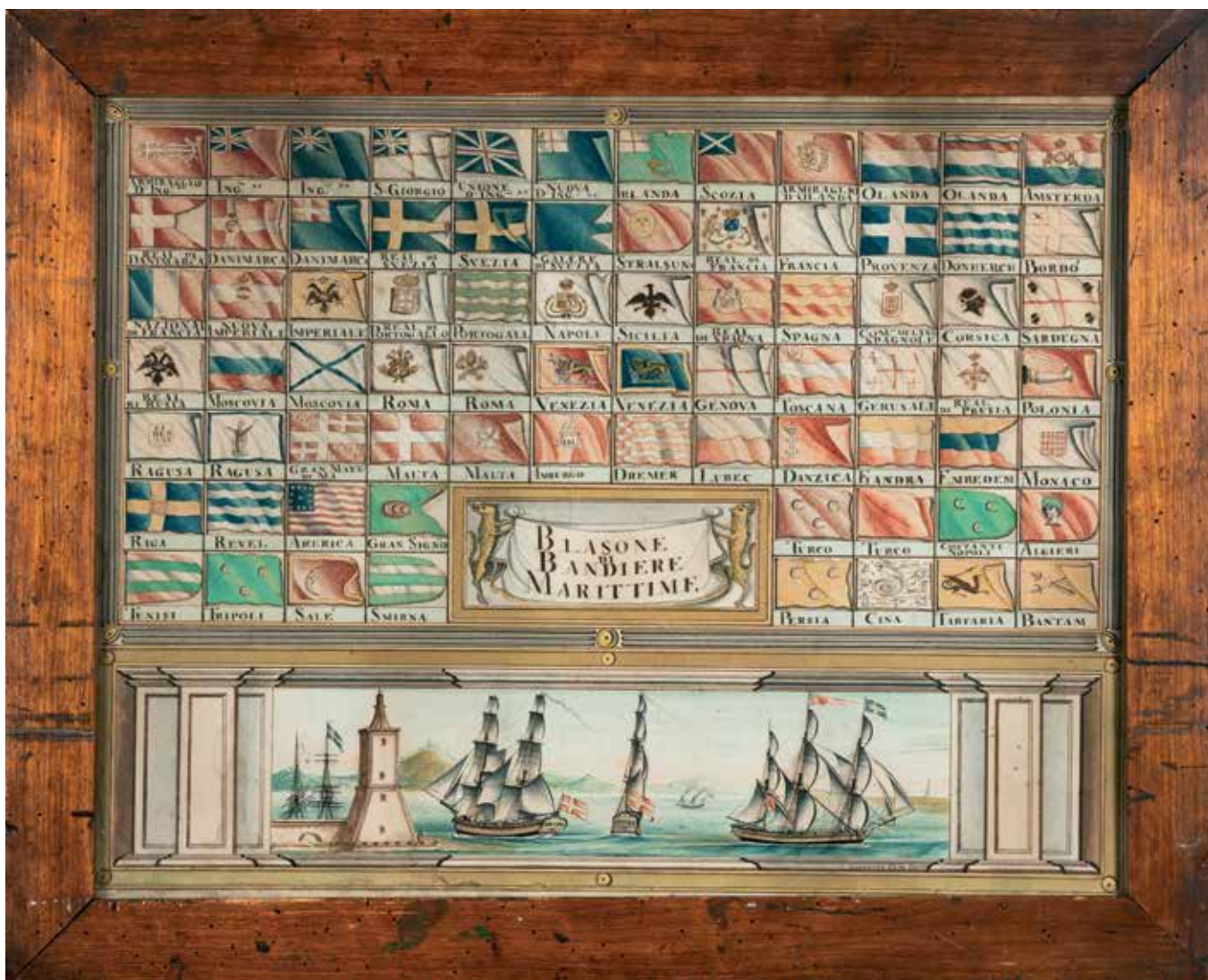
In general, charts by the prominent chart maker William Heather are unusually seen on the market. This large impressive chart seems unrecorded in relevant reference works including William B. Ginsberg «Sea Charts of Norway 1585 – 1812», New York 2012. The imprint in lower margin says: «Published as the Act directs July, 13th. 1801, by William Heather, at the Navigation Warehouse. No. 157 Leadenhall Street, London». It also says «Drawn by J. Norie. Teacher of Navigation». Later Norie became the owner of the Navigation Warehouse and is known for his blue back charts.

Provenance: According to previous owner: From a large set of sea atlases and sea charts sold in England most presumably belonging to Admiral Hyde Parker. He was the naval commander of the British Baltic fleet, and senior commander to Lord Nelson, at the Battle of Copenhagen in 1801.

Literature: In our available reference books: No hints of reference to this large sea chart

45 000,- (€3750)

FULL-PAGE ILLUSTRATION IN «KYSTENS HISTORIE»



24. GIUSEPPI FEDI (ITALIAN, ACTIVE IN ANCONA C. 1792 – 1820)

«BLASONE DI BANDIERE MARITIME.»

Watercolour on paper, 35x45cm

Signed lower right: Giuseppe Fedi Ancona

In the contemporary wooden frame

Drawn in Ancona c. 1800

Original watercolour, combined picture with 76 sea flags and a view from an Italian port including a Danish-Norwegian ship (the monogram of C7 in the flag).

Very little is known about the ship painter Giuseppe Fedi and his works are rarely seen for sale. We are not able to trace any other sea flag view by the artist.

Provenance: Formerly in the collection of the well known Norwegian map specialist, collector and author of several books Arne I. Hoem in Drammen.

Literature: «Kystens Historie i Kart og Beskrivelser Norges Sjøkartverk 1932 – 1982» Norges Sjøkartverk 1983. Full page illustrated on page 78. Arne I. Hoem was the author of several articles in this book and supplied many of the illustrations with items from his private collection.

Karsten Buchholz «Ship Portrait Artists – A Duide and Dictionary for Collectors» Hamburg 1997. Giuseppe Fedi on page 47

30 000,- (€2500)

IMPORTANT MAPS BY A NORWEGIAN CARTOGRAPHER



25. CHRISTOPHER BLIX HAMMER (GRAN 1720 – 1804)

2 map engravings on one big sheet, Late 20th Century printing from the original plate, wide margins.

Southern part:

«Trondhiems Stift Afdeelt udi Amter Den Stormægtigste Allernaadigste Enevoldsherre og Konge, Kong Christian VII...

Copenhagen (1786), but 20th Century, 33,5x53,5cm

Northern part:

Untitled

Copenhagen (1786), but 20th Century, 31,4x53,7cm

Engraved in Copenhagen by Johann Gottlieb Fridrich

Total dimension within the platemark: c. 73,5x55cm

In pencil inscribed lower left: «T.P. (indistinctly written) 15/25

20th Century reprint from the original 18th Century plates by Christian Hammer. Printed on fine copper engraving paper. Two very important Norwegian maps of Trøndelag, Nord-Norge and Finnmark. The original 18th century strikes were separate publications and are extremely rare.

Galleri Bygdøy Allé – Pama has twice handled these maps, both almost 20 years ago. One set was in separate sheets, and the other (from Ericksberg Castle, Sweden) was on one sheet. Both these sets are now in Nasjonalbiblioteket in Oslo as part of the Ginsberg Collection. We have not before seen this reprint or heard about it. Presumably one of 25 copies printed.

Literature: William B. Ginsberg «Maps and Mapping of Norway 1602 – 1855» appendix pages 278 – 281 illustrated.

7 000,- (€585)

A LATER STATE NOW INCLUDING TWO RAILWAY LINES, TO EIDSVOLL AND TOWARDS KONGSVINGER

26. NIELS A. RAMM AND GERHARD MUNTHE

“KART OVER AGERSHUUS AMT»

Engraving, 62x45,5cm

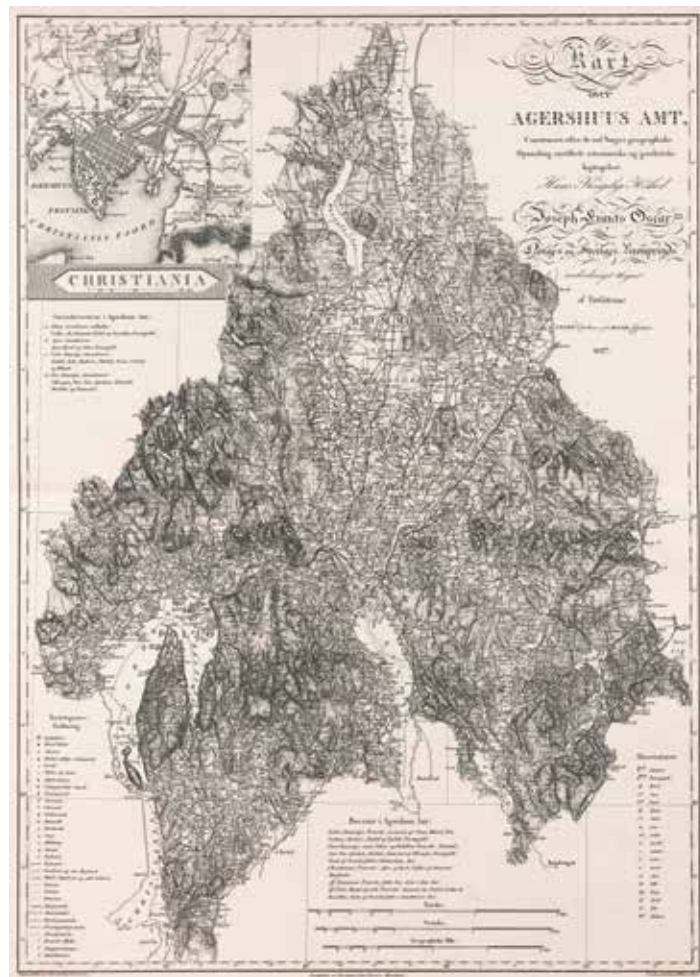
(PARIS 1827), BUT CHRISTIANIA after 1862

A finely engraved map with a detailed inset of Christiania upper left.

Scarce later state (after the opening of “Kongsvingerbanen” in 1862), but before the inset map of Christiania was removed (later issues by NGO). Originally the different “Amt maps” 1826 – 1832 were printed in Paris.

Literature: W.B. Ginsberg “Maps and Mapping of Norway 1602 - 1855” RM 2 illustrated page 238, state 1, not listing this later state

4 500,- (€375)



DETAILED MAP OF VOSS WITH SURROUNDINGS

27. VOSSEBANEN

“OVERSIGSKART OVER VOSSEBANEN OG DENS OMGIVELSER UDARBEIDET I MAALESTOKKEN 1: 100 000 AV PREMIERLÖITNANT VEDELER 1886”

Litografi, 53x65cm. Originally folded with decorated wrapper. Mint copy framed under double glass with the wrapper visible verso.

KRISTIANIA, Den private Opmaalings lith. Anstalt, 1886

Scarce railway map of Vossebanen which opened in 1883. Drawn are profiles, tunnels and train stations.

8 000,- (€670)



MANUSCRIPT MAP OF HALLINGDAL BY AN IMPORTANT NORWEGIAN
CARTOGRAPHER
FROM THE FAMILY COLLECTION OF HEINRICH ARNOLD THAULOW
(1808 – 1894)



28. HARALD NICOLAI STORM WERGELAND (BERGEN 1814 – KRISTIANIA 1893)

«N. WERGELAND HAANTEGNEDE KART OVER SURVASTRÆNNA I HALLINGDAL»

Pen, watercolor, and pencil on paper, contemporary laid down on canvas. In total c. 38x133cm

From Nes Prestegjeld in Hallingdal to the border of Nummedal. From Paalsbufjorden – Radungen – Buvassbrenna – Tunhovd – Tunhovdfjorden – Tronderud Marken – Aals Vandet and more. With hights and other details.

Probably drawn c. 1840 – 50

This is a rare opportunity to acquire an original manuscript map by an important Norwegian 19th Century map maker. The first big road map of Norway was made in 1847 by Josef Waligorski and Harald Nicolai Storm Wergeland. Wergeland had a long military career and in 1840s, he performed triangulation for the NGO and later he participated in the work resolving the Norwegian – Russian border. He was the first chairman of «Norges Jeger- og Fiskerforbund».

Harald Nicolai Storm Wergeland's uncle was Nicolai Wergeland (1780 – 1848), father to Camilla and Henrik and Harald's cousins. Harald grew up in their family. The relation ship to the Thaulow family and Heinrich Arnold Thaulow is through Alette Dorothea Thaulow (1780 – 1843). She was married to Nicolai Wergeland and is mother to Camilla and Henrik Wergeland.

The connection to Hallingdal and the manuscript map is through Harald Nicolai's cousin, Oscar Wergeland (1815 – 95), called «General Wergeland». As an engraver and lithographer he was also involved with maps. He built the cabin along Buvassbrenna, a place also Harald Nicolai spent much time. But the Thaulow family as well had a connection to the area through their fishing lisences at Buvassbrenna and Tunhovdfjorden.



«The Thaulow House» at Tyrifjorden, Røyse



The cabin belonging to Oscar Wergeland (General Wergeland), the cousin to the cartographer Harald Nicolai Storm Wergeland



Condition: Browned. Originally laid down on canvas and roled. With damages and loss. But still a good map!

Provenance: From parts of the Family Collection of Heinrich Arnold Thaulow through his son Johan Fredrik Carl Gustav Thaulow (born 1843) at Røyse, Tyrifjorden. The material of three items presented in the catalogue has been in the house in the Thaulow family at Røyse until present day. The property was bought in 1880 and the house was built by the family in 1893. In 1899 the building was expanded with the tower. In the provenance there is the family connection to Harald Nicolai Storm Wergeland and the cabin at Buvassbrenna in Hallingdal

Literature: Information from the family. Willam B. Ginsberg «Printed Maps of Norway 1602 – 1855» New York 2009, entry 75, page 168 – 173, Bjørn Geirr Harsson og Roald Aanrud «Med kart skal landet bygges – oppmåling og kartlegging av Norge 1773 – 2016» Utgitt av Statens kartverk, Ringerike 2016, several references to Harald Nicolai Storm Wergeland and Oscar Wergeland

20 000,- (€1675)

FROM THE FAMILY COLLECTION OF HEINRICH ARNOLD THAULOW (1808 – 1894)

29. HANS NYSOM

(BOTNE 1845 – KRISTIANIA 1903)

«HYDROGRAFISK KART OVER DET SYDLIGE NORGE UDARBEIDET VED KANALKONTORET AF LIEUTENANT HANS NYSOM»

Coloured lithograph, 92x77cm. Mounted on wood at top and bottom, roled.

Printed in the margin below the map: Kontur i Overtryk fra den geografiske Opmaalings Kart. – Den private Opmaalings Lith. Anstalt, Kristiania

KRISTIANIA, Den Geografiske Opmaaling, 1882

Unusual and important map showing rivers, lakes and other water conditions into deepest details. The map extends from Lindesnes to Dovre and Røros.

From Wikipedia: Hans Nysom var norsk officer, ingeniør og politiker for Venstre. Han var stortingsrepresentant 1895 – 1900, statsråd og medlem av statsrådsavdelingen i Stockholm.

+

“Norge – Oversigtskart over Dybde- og Højdeforholde. Maalestok 1: 2400.000”.

Coloured lithograph, 84x57cm

NORGES GEOGRAFISKE OP,-MAALING 1883

Provenance: From parts of the Family Collection of Heinrich Arnold Thaulow through his son Johan Fredrik Carl Gustav Thaulow (born 1843) at Røyse, Tyrifjorden. The material presented in the catalogue has been in the house within the Thaulow family at Røyse until present day. The property was bought in 1880 and the house was built by the family in 1893. In 1899 the building was expanded with the tower. In the provenance there is the family connection to Harald Nicolai Storm Wergeland and the cabin at Buvassbrenna in Hallingdal

5 000,- (€420)



FROM THE FAMILY COLLECTION OF HEINRICH ARNOLD THAULOW (1808 – 1894)

SIGNED PRESENTATION COPY TO H.A. THAULOW

30. THEODOR KJERULF & TELLEF DAHL

“GEOLOGISK KART OVER DET SONDENFJELDSKE NORGE OMFATTENDE CHRISTIANIA, HAMAR= OG CHRISTIANSANDS STIFTER. OPTAGET I FØLGE FORANSTALTNING AF DEN KONGELIGE NORSKE REGJERINGS DEPARTEMENT FOR DET INDRE. MED BENYTTELSE AF ÆLDRE KARTER OG IAGTAGELSER AF PROFESSOR B.M. KEILHAU, HR. J. HÖRBYE O. FL. SAMT AF DAGBÖGER OG ARBEIDSKARTER INDSENDTE FRA DE UNDER SOMMERREISERNE ENGAGERENDE HERRER...(15 NAMES).

CHRISTIANIA 1858 – 65

Blue wrapper with text verso, and following coloured maps:
Geologisk Kart over Det Söndenfjeldske Norge – II. Christiansands Stift I 4 Blade 1858 – 1865 Maalestok 1: 400,000. Litografert og fargetrykt hos Carl Schwenzen i Christiania, litografert av Guttorm Jacobsen. 66,6x69,5cm. I. Christiania og Hamars Stifter i 6 Blade. 116x78cm.

+ 3 Geological profiles, large folding charts c. 42x165cm, 14x135cm, and 18x43cm

Contemporary half calf. Large folio, 45x46cm

Inscription on the blue wrapper: Til Hr. Doktor Thaulow Værkseier ærbødigst fra Forfatterne

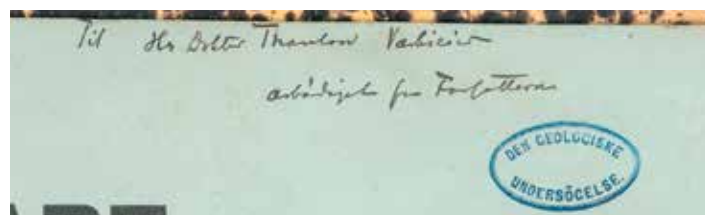
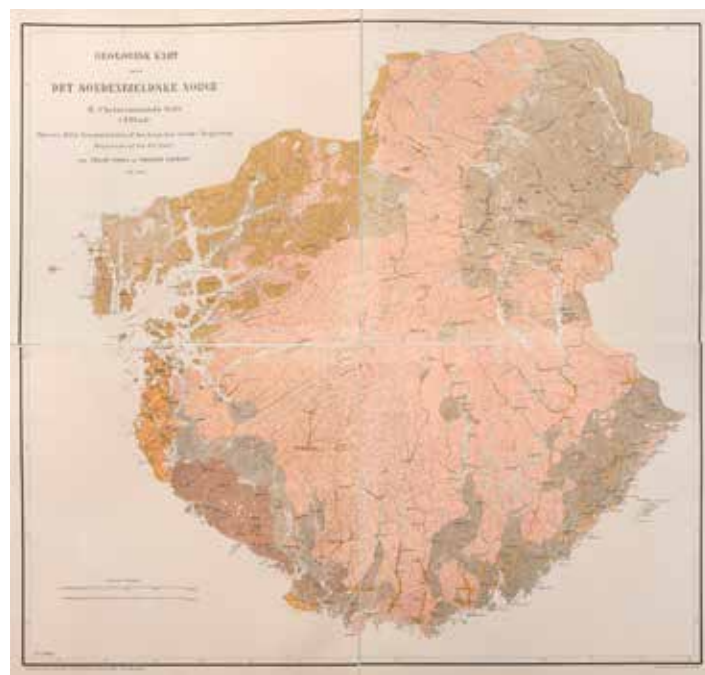
Stamp: Den Geologiske Undersøgelse

Important early geological maps based on: “En kgl. resolusjon av 6. februar 1858”. “Istandbringelse af et detaljeret geologisk Kart med tilhørende Profiler over Norge” – regnes som oppstarten til Norges geologiske undersøkelse (see Harsson and Aanrud page 494).

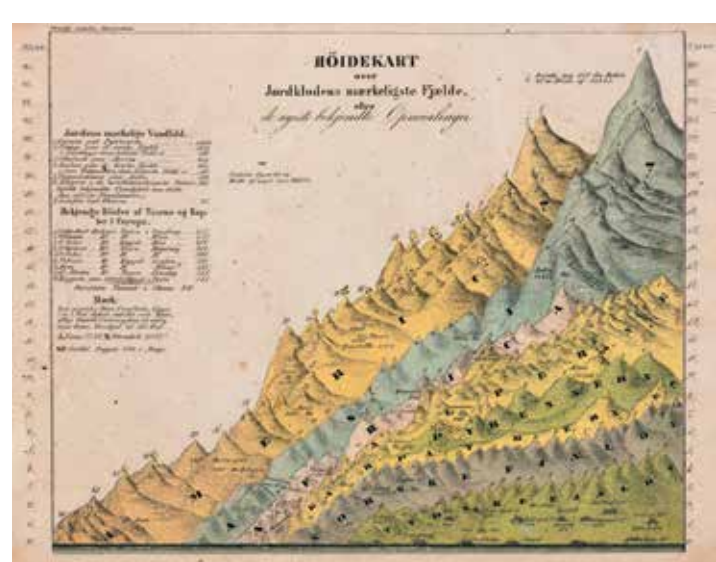
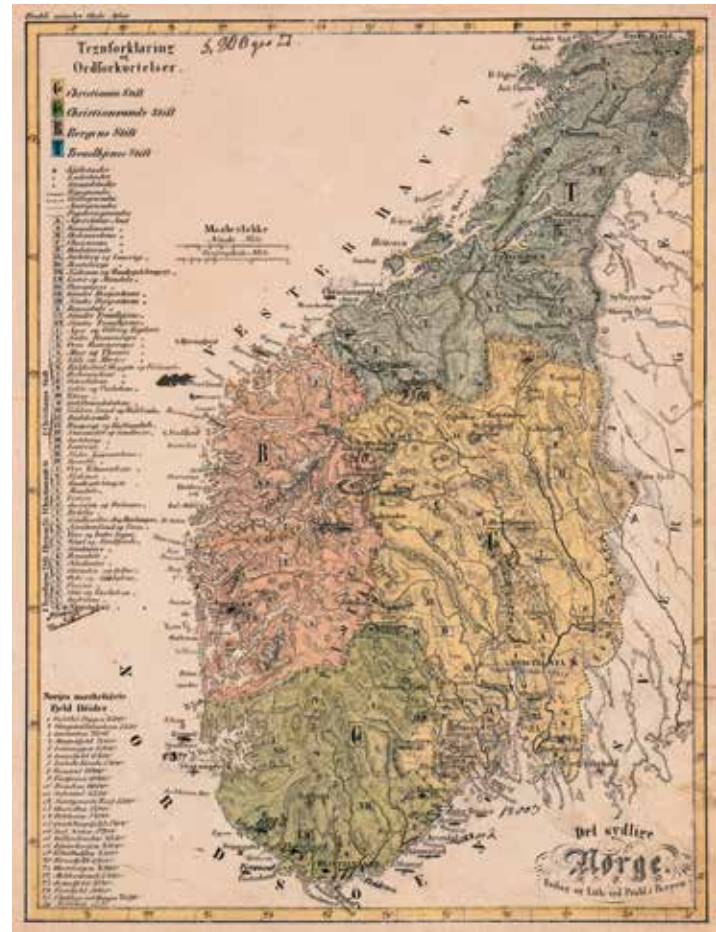
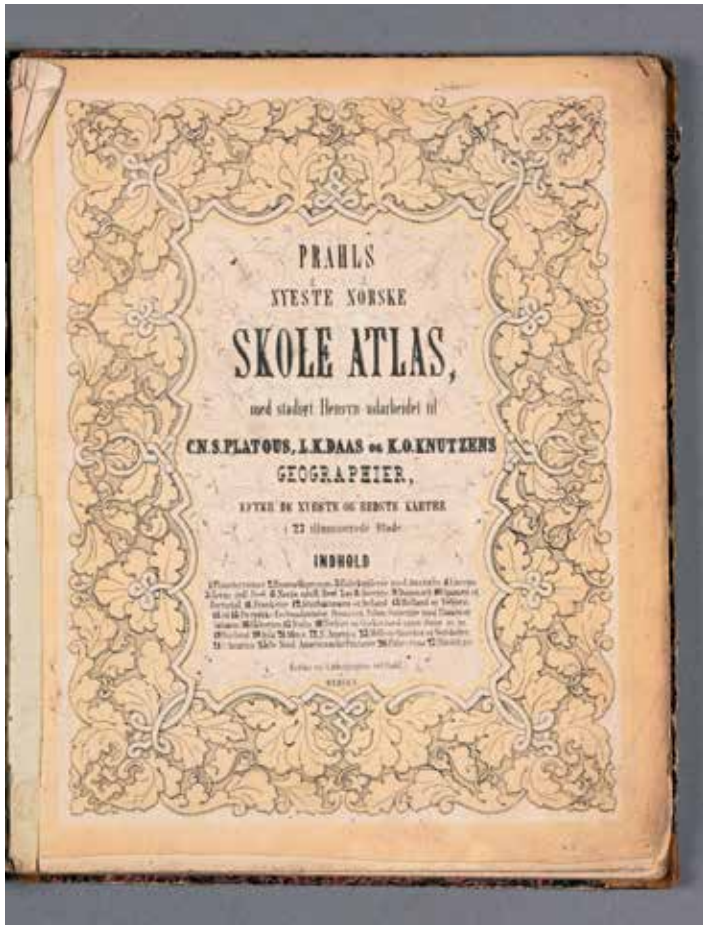
Provenance: From parts of the Family Collection of Heinrich Arnold Thaulow through his son Johan Fredrik Carl Gustav Thaulow (born 1843) at Røyse, Tyrifjorden. The material presented in the catalogue has been in the house within the Thaulow family at Røyse until present day. The property was bought in 1880 and the house was built by the family in 1893. In 1899 the building was expanded with the tower. In the provenance there is the family connection to Harald Nicolai Storm Wergeland and the cabin at Buvassbrenna in Hallingdal

Literature: Bjørn Geirr Harsson og Roald Aanrud «Med kart skal landet bygges – oppmåling og kartlegging av Norge 1773 – 2016»
Utgitt av Statens kartverk, Ringerike 2016

15 000,- (€1250)



FIRST EDITION OF AN EXCEEDINGLY RARE NORWEGIAN SCHOOL ATLAS



31. GEORG W PRAHL (GRIMSTAD 1798 – ALVØEN, BERGEN 1883)

“PRAHLS NYESTE NORSKE SKOLE ATLAS, MED STADIGT HENSYN UDARBEIDET TIL C.N.S. PLATOUS, L.K. DAAS OG K.O. KNUTZENS GEOGRAPHIER, EFTER DE NYESTE OG BEDSTE KARTER I 27 ILLUMINERED E BLADE.”

Lithographed title-page with index, printed on velin paper; 27 maps (25 full-page and 2 double-page), mostly of Europe but covering the world.

Format c. 26,2x21cm

Contemporary half calf, marbled covers (spine with damages and splits, slightly worn)

BERGEN, Forlag og Lithographie ved Prah, no date, but c. 1845 – 50?

IMPORTANT EARLY ATLAS PUBLISHED IN NORWAY. COMPLETE WITH TITLE-PAGE AND 25 MAPS ON 27 SHEETS, FINELY COLOURED BY A CONTEMPORARY HAND. APPARENTLY THE ONLY KNOWN COPY.

The atlas belongs to a group of “School atlases” published by the Bergen publisher and lithographer Georg C.W. Prah. He set up his business in 1827 and his first “Norsk Skoleatlas” was published in 1836.

After 1814 there was a serious focus on mapping of Norway. Prah in Bergen as a publisher became an important distributor. In Immanuel Ross we can read about Prah’s works in the 1830 – 40s: “Af karter udgav Prah i denne tid ikke faa, dels generalkarter over Norge, dels kystkarter og søkarter...fremdeles større og mindre skoleatlas. Flere av disse arbeider afhjalp vistnok et væsentlig savn; særlig gjelder dette hans “Norsk Skole Atlas, indrettet for vore skoler”, hvilket i udgaven for 1836 fandt utbredelse over det hele land”. Prah’s atlases were at the time highly recommended by professor and director of NGO Christopher Hansteen, Ludvig K. Daae and others. According to Ross: “Prah havde da ogsaa kort efter den tilfredsstillelse, at der ved en kongelig resolution bevilgedes 300 spd. (1200 kr) af oplysningsvæsenets fond til indkjøb af hans atlas – hvilken forsyning skulde uddeles gratis til trængende distrikter.” (See pages 30 – 31)

Information about Prah’s cartographic publishing activities is both sparse and puzzling. A note on the title-page of Prah’s “Godtkjøbs – Atlas” (1858) indicates that 12 520 copies were printed—Subskriptions-Udgave hvorpaa er tegnet 12,520 Expl.! However, today all of Prah’s atlases may be regarded as “Rare to the point of not existing”. Even the National Library in Oslo has only a limited selection of Prah’s cartographic production. The acquisition of the Ginsberg collection in 2017 filled some gaps, but there are still several missing pieces.

The copy offered is a scarce and important one in Prah’s œuvre.

In 2010 Kunstantikvariat PAMA supplied the Ginsberg Collection with the second edition of “Prah’s Nyeste Norske Skole Atlas”. As this was subsequent to the publication of “Maps and Mapping of Norway,” Ginsberg included its two Norway maps (southern and northern sheets) as Entry 78+ and Entry 78++ in the “updates” section of the website www.septentrionalium.com.

There are some slight—and some major—differences between the north Norway map and the south Norway map in this, the first edition of Prah’s Nyeste Norske Skole Atlas compared to Ginsberg’s “Andet Oplag”.

Condition: In general, good condition. Some tears affecting some maps, only a few affecting printed surface. Some maps with names underlined in ink. Old faint pencil notations in the margins on some maps.

Literature: Immanuel Ross “Kaptein Georg Prah 1798 – 1883 – En Biografisk Skisse” Bergen 1896. Nanna Ebbing “Prah’s litografiske arbeider” Småskrifter for bokvenner 1959

William B. Ginsberg “Maps and Mapping of Norway” New York 2009. Entries 61, 63, 71, 86 and PRA 1. William B. Ginsberg “Maps and Mapping of Norway, 1602 – 1855 – Updates, by entry” New York 2015 (On Septentrionalium.com) Number 78+ and 78++. Dating the maps in the atlas c. 1850

30 000,- (€2500)

32. ALEXANDER KEITH JOHNSTON

(1804 – 71)

«THE PHYSICAL ATLAS OF NATURAL PHENOMENA...A NEW AND ENLARGED EDITION»

Folio, 55x38cm.

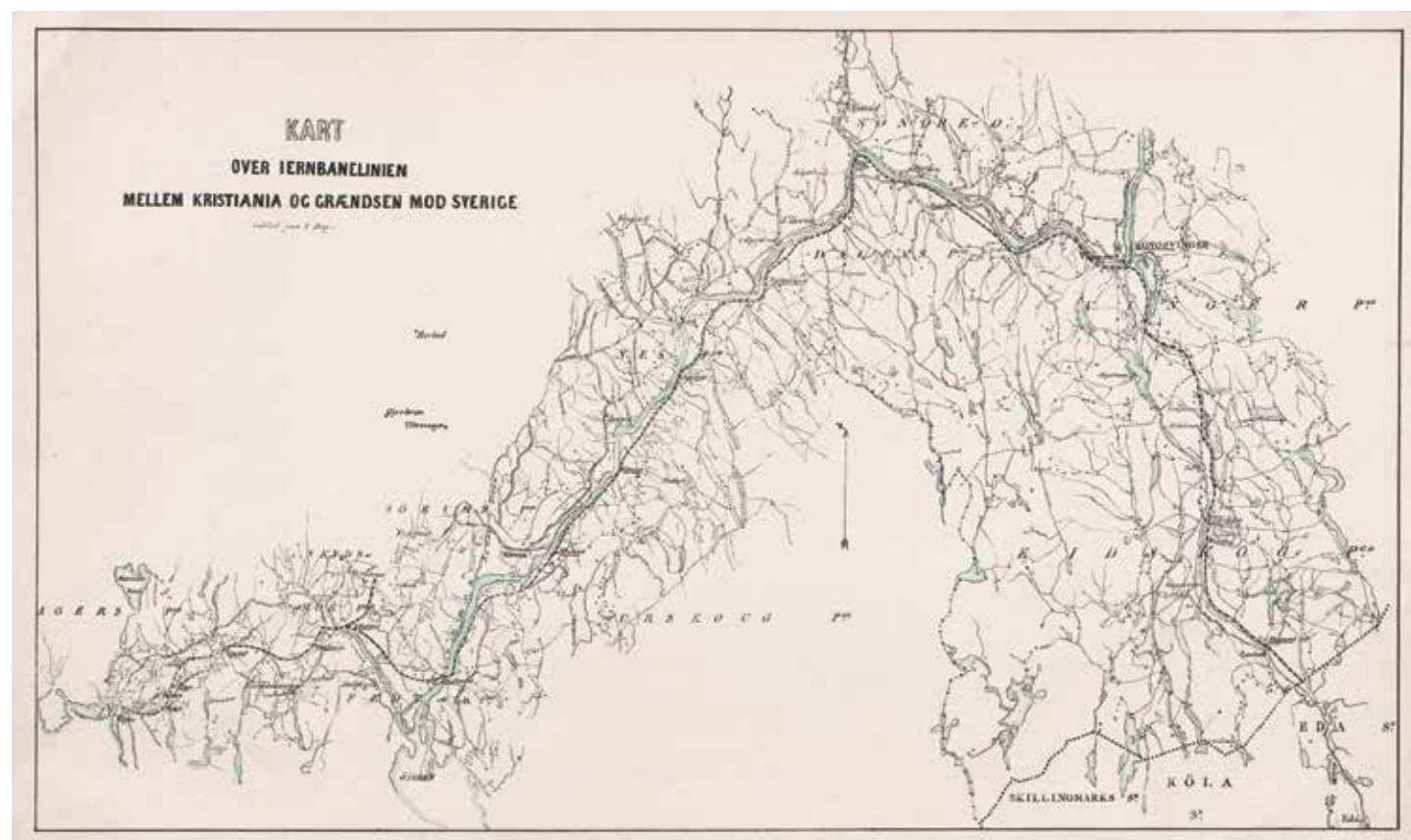
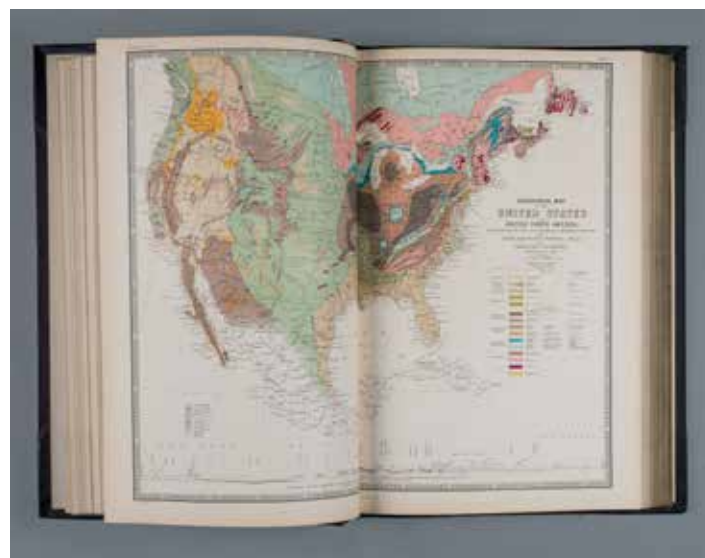
35 double-page printed in colours with some hand-colouring. The majority are lithographed by some are engraved. Original cloth by the publisher, gilt title on front cover (slightly worn and a few light scratches)

EDINBURGH and LONDON 1856

This is second enlarged edition compared to the first edition 1848. An impressive atlas complete with all text.

Provenance: The signature of J. Smith, Edinburgh 1865, Ex library copy «Det Kgl. Selskap For Norges Vel» no. 1573 (stamp on the title-page)

6 000,- (€500)



33. ANONYMUS MAP DRAWER AND PUBLISHER

“KART OVER IERNBANELINIEN MELLEM KRISTIANIA OG GRÆNDSSEN MOD SVERIGE UDFÖRT PÅ 1 DAG.”

Lithograph, printed on thick paper, hand-coloured in green-light blue on lakes and rivers, 27,5x47cm + margins.

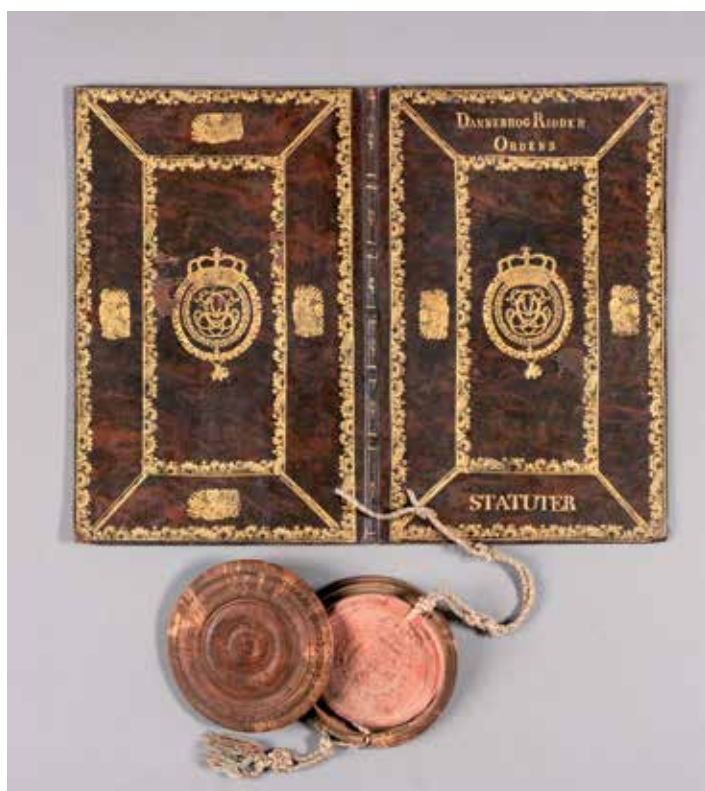
Printed c. 1865

“Kongsvingerbanen” opened in October 1862 and was extended to Magnor and the border of Sweden in 1865 under the name of “Grensebanen”. We have previously not seen this map recorded or seen it in any relevant bibliography.

5 000,- (€420)

ILLUSTRATED BOOKS

AN EXTREMELY WELL PRESERVED COPY
- THE DANISH TEXT EDITION OF DANNEBROG



34. (CHRISTIAN V, KING OF DENMARK -NORWAY) -

"DANNEBROGS ORDENS STATUTER"

"DANNEBROG RIDDER ORDENS STATUTER." (THE DANISH EDITION OF "STATUTA ORDINIS DANNEBROGICI")

Folio, 35,2x22,2cm. Engraved title-page, 19pp including 4 text engravings, and a full page engraved portrait of Christian V extra to the pagination. Page 19 has the signature "Schack" lower right.

Contemporary light brown morocco gilt. In centres the large crowned monogram of Christian V within a double gilt panel with floral design mitred to the center by a double fillet, two panels gilt lettered "Dannebrog Ridder Ordens", spine in six compartments, each with small floral design. A WAX SEAL IN DIAM. 10,3CM OF ROYAL ARMS in wooden case pendant on braided cord from foot of spine, (some light rubbing on covers only, hardly touching the gilt pattern)

COPENHAGEN (no place or date, but c. 1671)

A MAGNIFICENT, DECORATIVE AND CRISP COPY.

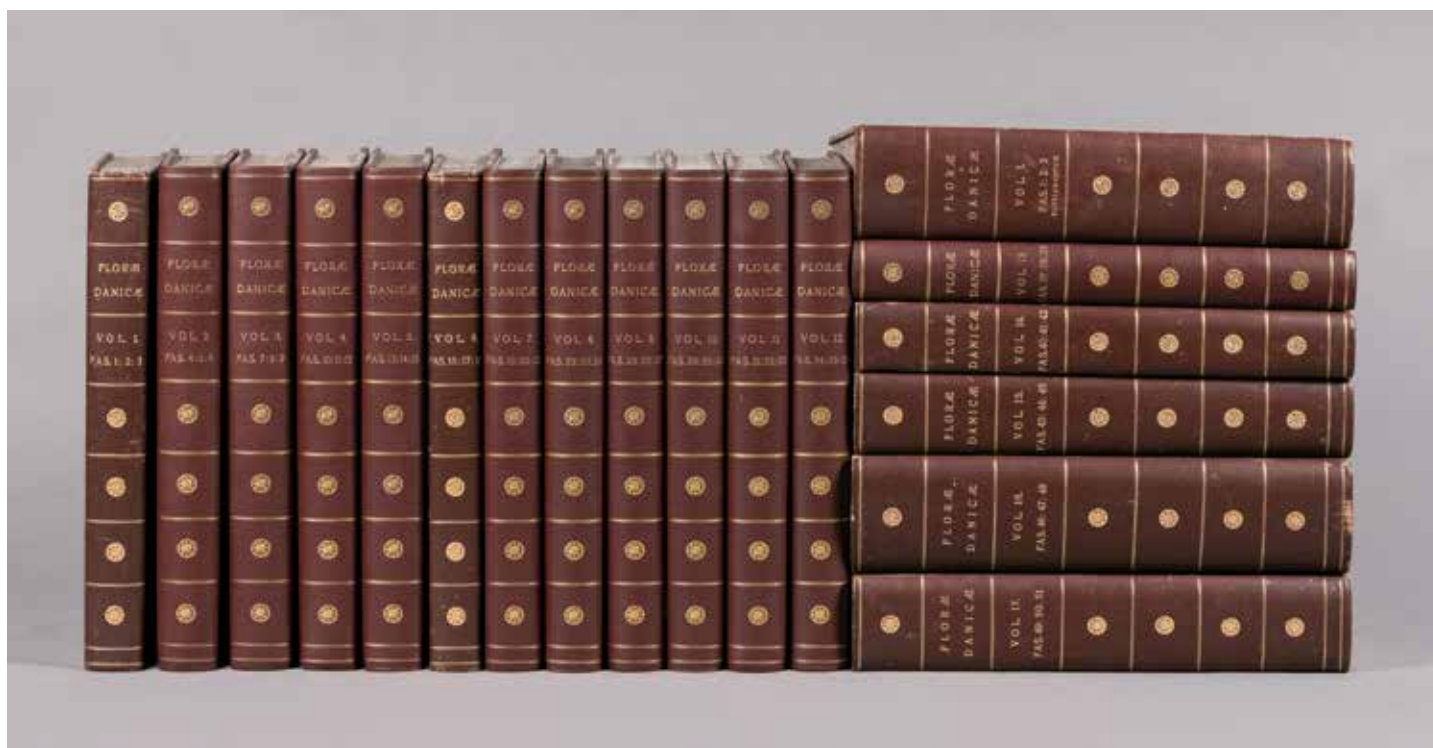
The Order of the Dannebrog is an Order of Denmark (and Norway until 1814), instituted in 1671 by Christian V (1670 – 99).

Rarely found in this pristine condition with the wax seal in the wooden carved box complete with the lid.

48 000,- (€4000)



THE COMPLETE SET OF ONE OF THE MOST AMBITIOUS PRINTED BOTANICAL PUBLICATIONS



35. GEORG CHRISTIAN OEDER: FLORA DANICA

«ICONES PLANTARUM SPONTE NASCENTIUM IN REGNIS DANIÆ ET NORVEGIÆ, SLESVICI ET HOLSATIÆ, ET IN COMITATUS OLDENBURGI ET DELMENHORSTIÆ...FLORAE DANICAE NOMINE INSCRIPTUM»

+ ADDED: «NOMENCLATOR BOTANICUS TIL AT BRUGE VED FLORA DANICA»

Latin text edition, 18 volumes, large folio, c. 37x23,8cm. The «Nomenclator» in 8vo. COMPLETE WITH 3240 FULL PAGE ENGRAVED PLATES OF FLOWERS, GRASSES AND FUNGI. IN ADDITION OEDER: «NOMENCLATOR BOTANICUS». ALL PLATES IN VOLUME 13 (FASCICULUS 37-39) COLOURED BY A CONTEMPORARY HAND.

18 volumes (comprising 51 fascicles in 17 volumes, and 3 supplements in one volume) + «Nomenclator Botanicus».

The «Flora»: 20th Century uniform half calf, marbled covers (two volumes with light rubbing)

The «Nomenclator» in near contemporary half calf

COPENHAGEN, 1766 – 1883, the «Nomenclator» 1769

A COMPLETE AND FINE SET IN ITS ORIGINAL UNCOLOURED STATE (VOLUME 13 HAND-COLOURED) INCLUDING THE SCARCE «NOMENCLATOR». THIS IS THE MOST MONUMENTAL AND AMBITIOUS FLOWER BOOK PROJECT IN SCANDINAVIA.

The work was initiated by Christian Oeder and was not finished until 1883 with a total of 3240 engraved plates. The first volumes before 1814 included Norway. The first plate in «Flora Danica» is *Chamæmorus Norvagica* (Cloudberry («Mulle»)). In addition to Norway the work covers the plants of Greenland, Iceland, the Faroe Islands, much of Northern Germany and some Swedish flora, beside Denmark itself. Sets of Flora Danica were published uncoloured, but could be delivered illuminated on request for an extra expense.

The set in general very good and fresh condition. Title-page in volume 13 (the coloured volume) spotted also with age-toned pages of the final part *Icones Florae Danicae Fasciculus Trigesimus Nonus*.

Marginal waterstain in left margin through the last part of volume 1, sometimes affecting the printed surface, a few plates shaved at top only marginally touching the image. Three small marginal repairs on title-page volume 1,

Provenance: Acquired c. 1987 from Rosenkilde & Bagger by a Norwegian collector of flower books

175 000,- (€14600)

M DCC LXXIX.



File: CLAUDIO PHILIPPEL



FIVE VOLUMES OF THE DANISH TEXT EDITION



36. GEORG CHRISTIAN OEDER

FLORA DANICA – FIVE VOLUMES OF THE DANISH TEXT EDITION FROM THE PERIOD BEFORE 1814 INCLUDING NORWAY

«AFTEGNINGER PAA DE PLANTER, SOM VOXE VILDT I KONGERIGERNE DANMARK OG NORGE, I HERTUGDOMMENE SLESVIG OG HOLSTEEN, OG I GREVSKABERNE OLDENBORG OG DELMENHORST, TIL AT OPLYSE DET UNDER TITEL FLORA DANICA...UDGIVNE AF BEMELDTE VERKS FORFATTER GEORG CHRISTIAN OEDER»

5 volumes of the set: «Første Bind – Hæfte I, II, and III» (180 plates), «Fjerde Bind – Hæfte X, XI, XII (180 plates), Femte Bind – Hæfte XIII, XIV, XV» (180 plates), «Siette Bind – Hefte XVI, XVII, XVIII» (180 plates), «Syvende Bind – Hefte XIX, XX, XXI» (180 plates). In total 900 engraved full page plates of flowers and plants (of 3240)

Folio, 36,2x23,5cm. Contemporary half calf, spine with 4 raised bands with title compartment and with volume number decorated with an eagle, all edges painted. Russian bindings? (Some covers slightly rubbed with scratches).

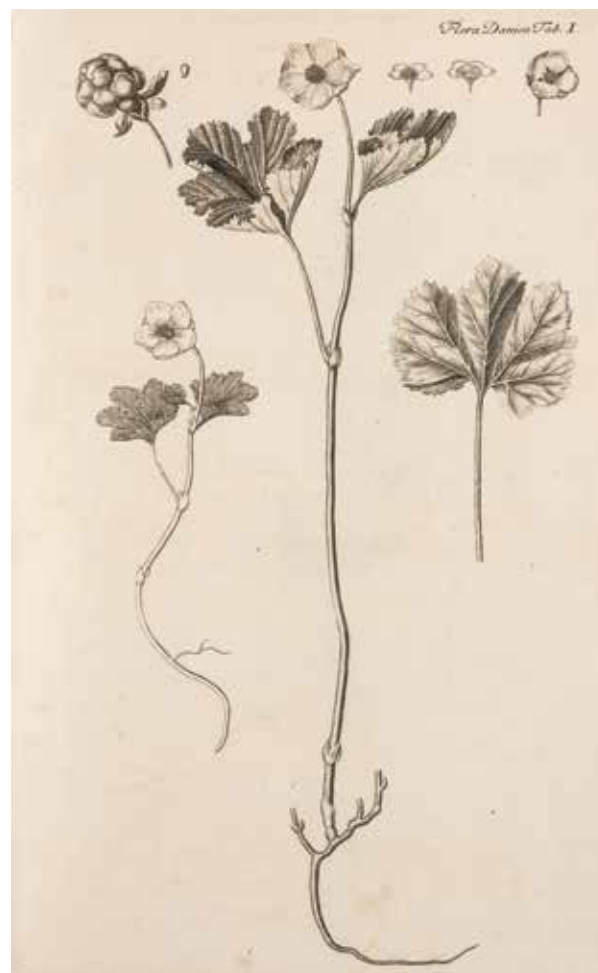
KIØBENHAVN 1766 – 1777 – 1782 – 1792 - 1799

A FINE SET WITH THE INTERIOR IN VERY GOOD AND FRESH CONDITION. THE DANISH EDITION IS UNCOMMONLY SEEN.

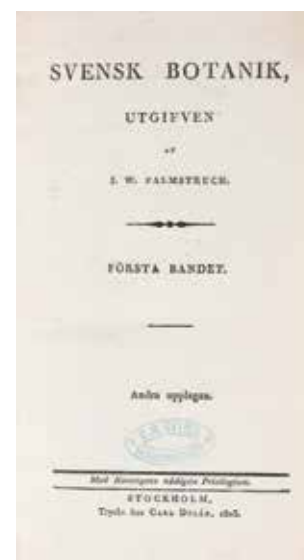
Lacking volume II and III of the first 7 volumes. Lower right corner on each title-page cut and restored.

Provenance: Apparently from an old Russian collection, a private Norwegian collection of flower books, acquired in the antiquarian trade c. 1990

45 000,- (€3750)



A HIGHLIGHT OF SWEDISH BOOK PRODUCTION OF NATURAL HISTORY THE COMPLETE RUN IN 11 VOLUMES



37. JOHAN WILHELM PALMSTRUCH, C. QUENSEL, O. SWARTZ AND OTHERS

“SVENSK BOTANIK”

Complete in 11 volumes, I-XI, (volume 7 and part I of volume 8 in one, part II of volume 8 in a separate volume). 8vo, c. 21,8x13cm. With 774 hand-coloured engraved plates with accompanied text. Bound with the original yellow wrappers to the final register in volume XI as well as the blue colour index to the same volume.

Volume I – VIII part one, in contemporary half calf gilt. Volume VIII part 2 in modern half-calf, volume IX in old half-calf, volume X in half green morocco with red title and volume entry, volume XI bound by G. Hedberg. (A few bindings slightly worn, damage to top of spine volume I, volume VII – VIII part 1 slightly bent, spine on volume XI faded)

As “always” the two portraits by Palmstruch and Swartz are not present, some occasional light browning and offsetting but less than usual, very few plates shaved with no loss of print.

STOCKHOLM & UPPSALA 1802 – 1843

A FINE, COMPLETE SET IN FRESH COLOURS INCLUDING THE SCARCE VOLUME XI (1830-43). THE MAJORITY OF THE FASCICULES OF THIS PART WAS DESTROYED IN FIRE MAY 1840.

“Svensk Botanik” is a monument in the Swedish history of book printing. Not only in the field of Natural History but also for books in general. It is a “must to have” in libraries with ambitious within science, history and general important books.

NOK 55 000,- (€4600)

14. NOBLE - DOCUMENT (DANISH «ADELSBREV»)

IN MANUSCRIPT AND ILLUMINATED.
CONCERNING ANKER VILHELM FREDERIK
BORNEMANN WHO FROM 1795 TO 1801 WAS
«GENERALAUDITØR» IN CHRISTIANIA

Folio, 42,5x31cm. Pages 3-7 in manuscript and illuminated. 3 leaves 12pp. Signed by Frederik VI (or possibly by a secretary?). Contrasigned Kaas, Cold (?), Knudsen, (Johan) Bülow, Monrad, Frost.

Red full morocco, wax seal in silver box (lacking the lid)

Dated COPENHAGEN 9. JULI 1811

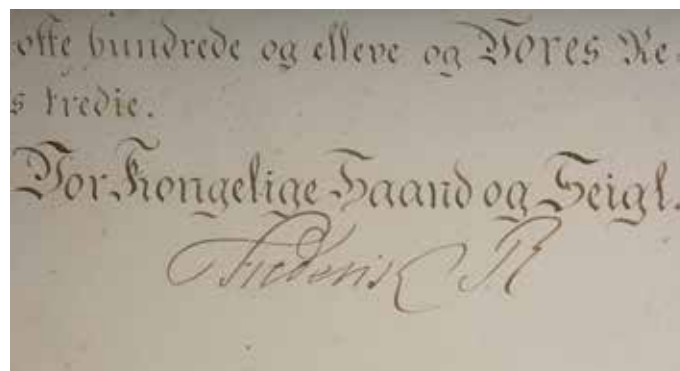
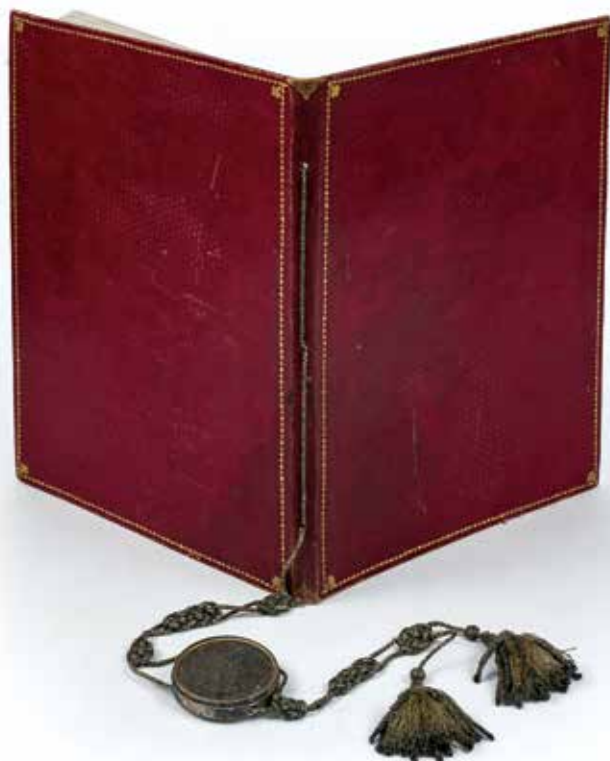
Anker Vilhelm Frederik Bornemann (Copenhagen 1763 – 1854) was from 1822 Justitarius of the High Court in Denmark. He was ennobled in 1811, and was presented this official document.

As «Generalauditør» in Norway 1795 – 1801 he lived in Christiania. In Conradine Dunker's «Gamle Dage» we can read about Bornemann who apparently was a popular Danish official in Norway. He also took part in «Det dramatiske selskap». Johan Herman Wessel had been his teacher in Copenhagen. Page 201: «Generalauditeur Bornemann var en meget munter, vittig og underholdende Mand. Han havde havt Johan Herman Wessel til Lærer, han kunde hans Digte udenad og fremsagde mesterlig Johan v. Ehrenpreis. Han var udtømmelig i Anectoder». Bornemann's portrait reproduced on page 202 in «Gamle Dage».

A RARE ORIGINAL ILLUMINATED DOCUMENT.

Literature: Conradine Dunker «Gamle Dage, Erindringer og Tidsbilleder» Kristiania og Kjøbenhavn 1909.

25 000,- (€2500)





Si Frederik

den Siette,
af Guds Naade Konge

til
Danmark og Norge,
de Venders og Bøfvers,
Herlug iudi Slesvig, Holsten, Stormarn,
Rithmarffen og Oldenborg,

Viore vittterligt: At da Vs elstelig
Anker Wilhelm Frederik Bernemann,
Ridder af Dannebrogen, Vores General =
Auditeur i Danmark og Hertugdømmene, Re-
puteret i Vort General Commissariats Colle-
gio og overordentlig Assessor i Vores Høieste
Ret, for Vs aller. underdaniigst haver andrag-
get, at Hans Faders Døttfodstendebarn, Carl
Rudolph Bernemann, af Vores høiselig
Si Oldesader, Kong Christian den Siette,



Stor-Elvdal Hotell

EN KUNST- OG MATOPPLEVELSE

MIDT I ØSTERDALEN 2480 KOPPANG

Tel.: 62460455 • Epost: pal.sagen@storelvdalhotell.no



Norsk
Kultursenter
3 km

Arnold Haukeland «Bølgen» 1979/80 foran hotellets fredete Barfrøstue. Syrefast stål, høyde 190cm + sokkel, signert

TUROPPLEVELSER • MATOPPLEVELSER • KUNSTOPPLEVELSER •
KULTUROPPLEVELSER



